



HORTICULTURE CATALOG



TXPEX6



CLNX Plus Series



WS4

FROM THE INVENTOR OF THE THERMAL TRANSFER PRINTER
SATO'S HORTICULTURE PRINTER LINE

SATO AUTHORIZED MASTER RESELLERS



OBC Northwest, Inc.

1076 SW Berg Parkway
P.O. Box 759
Canby, OR 97013
(800) 477-4744 or
(503) 266-2021
Fax (503) 266-6837
obc@obcnw.com
www.obcnw.com

Loda Enterprises, Inc.

10621 Irma Dr. Unit A
Northglenn, CO 80233
(800) 654-5331 or
(303) 298-1833
Fax (303) 292-0173
sales@loda.com
www.loda.com

United Label & Sales Corporation

12900 Berea Road
Cleveland, OH 44111
(800) 726-5153 or
(216) 226-4030
Fax (216) 226-9007
info@unitedlabel.com
www.unitedlabel.com

Texpak, Inc.

130 New Hyde Park Rd
Franklin Square, NY 11010
(800) 645-3416 or
(516) 326-7720
Fax (516) 326-7970
info@texpak.com
www.texpak.com

Specialty Tag & Label, Inc.

3963 Falcon Parkway
Flowery Branch, GA 30542
(800) 475-2040 or
(770) 965-0440
Fax (800) 475-7782 or
(770) 965-0474
order@specialtytag.com
www.specialtytag.com

Labels Etc., Inc.

700 West Austin Street
Conroe, TX 77301
(800) 346-8191 or
(936) 760-3080
Fax (936) 760-3015
terry@labelsetc.com
www.labelsetc.com

Advanced Labeling & Marking

15240 NW 60th Ave
Miami Lakes, FL 33014
(305) 512-0001
Fax (305) 512-9099
sales@advancedlabeling.com
www.advancedlabeling.com

SATO America

Horticulture Division • 930 Jimmy Ann Dr. • Daytona Beach, FL 32117 • (888) 871-8741
14125 S Bridge Cir • Charlotte, NC 28273
1140 Windham Pkwy • Romeoville, IL 60446
14612 NE 91st St • Redmond, WA 98052
www.satoamerica.com/hort

Table of Contents

THERMAL PRODUCTS

Thermal Printers	2-3
Thermal Transfer Ribbon	4
Thermal Accessories	5
Labeling Software	6-7
RFID Solutions	8
Setup and Custom Printing Charges	9
Thermal Slip-On® Tags	10-11
Thermal Pot Tags	12-13
Thermal Hang Tags.....	14-15
Thermal Signs.....	16-17
Thermal Pressure Sensitive Paper Labels	17
Thermal Pressure Sensitive Labels	18-19

PRODUCT HIGHLIGHTS

Product Highlights	20-21
QR Code Instructions.....	21

LASER PRODUCTS

Color Laser Slip-On® Tags	22-23
Color Laser Hang Tags.....	24-25
Color Laser Signs.....	26
Color Laser Pressure Sensitive Labels	27

RETAIL GARDEN CENTER PRODUCTS/GROWER SUPPLIES

4c Custom Signs	28
Custom Signs.....	29
Stock Signs	30
Blank Signs	31
Sign Holders.....	32
T-Stakes	33
Injection Molded Stakes	33
Blackboard Markers.....	34
Pens	34
Sold Tags.....	35
ID Tags	35
Wrap-Around Ties.....	35
Tag Guns and Accessories.....	36

CUSTOM PRINTING

Custom Printing Solutions	37
Custom Picture Tags and Labels.....	38
Tree Wraps.....	39
Simply SATO	39

TXPEX6 Thermal Printer w/optional RFID

The SATO 6-inch TXPEX6 Horticulture Thermal Transfer printer with optional RFID encoding capabilities enabling UHF RFID smart label and tag encoding. This SATO printer was designed to support the most demanding Horticultural printing applications. The TXPEX6 can effortlessly handle and print material thickness up to 25 mil, with superior print head quality at 305 dpi (dots per inch), and at speeds up to 12 ips (inch per second). The TXPEX6 can also print tag widths up to 10 inch "Ladder-Style" (sideways); this print orientation maximizes ribbon usage and improves throughput. TXPEX6 included Interfaces (standard): USB, LAN & RTC.



ITEM	DESCRIPTION	PRINTER	QTY PACK	PRINTER WEIGHT	LIST PRICE	U/M
TXPEX6	Standard, TXP 6" Thermal Transfer Printer, 305 dpi	●	1	58 LB	\$4,595.00	EA
TXPEX6-RFID	Standard, TXP 6" w/RFID Thermal Transfer Printer, 305 dpi	●	1	58 LB	\$6,595.00	EA
SXI056	Thermal Printer Core Adapter	-	-	-	\$78.00	EA

WS4 Thermal Printer

The SATO 4-inch WS4 Desktop Thermal Transfer printer our value model that complements our line of printers. This printer can minimize media transition when using a variety of media types. The WS4 has print width of 4.09" wide, at 203 or 305 dpi (dots per inch) and print speeds up to 6 ips (inch per second). It was designed to print thinner gauge material, SATO pressure sensitive adhesive labels, TT End-to-End Slip-On® tags, and ZX pot stakes. WS4 included Interfaces (standard): USB, RS232 & LAN



ITEM	DESCRIPTION	PRINTER	QTY PACK	PRINTER WEIGHT	LIST PRICE	U/M
WT202-400NN-EX1	Standard, WS4, 4.1" Thermal Transfer Printer, 203 dpi	●	1	5.5 LB	\$635.00	EA
WT302-400NN-EX1	Standard, WS4, 4.1" Thermal Transfer Printer, 300 dpi	●	1	5.5 LB	\$799.00	EA
59-C2103-011	CP/OS/A Media Stacker, Grey, Plastic	-	-	-	\$35.00	EA

● Prints up to 6.5" on a 7" web (material width). Fits most SATO printers. Print width may vary.

● Prints up to 6" on a 10" web (material width). TXPEX6

● Prints up to 4" on a 4.5" web (material width). CL4NX Plus - WS4

CLNX Plus Series Thermal Printer

SATO's revolutionary 4-inch, and 6-inch (UHF RFID enabled optional) Industrial class Thermal Transfer printer series, the CLNX Plus has innovation built-in with an intuitive, easy-to-use interface and platform for the most demanding customer applications and harsh environments. This printer has full color display screen and pre-installed printer operational, setup, and "how-to" videos making training, operation, and maintenance is exceptionally easy.

The CLNX Plus features a max print media width, 4.1" and 6.6", respectively and print speed up to 14 ips (varies by printer model), and print quality up to 609 dpi (varies by printer model). This Energy Star compliant Printer, was design with a 60-degrees high lift printer mechanism for simple, easy media and ribbon loading, and a collapsible bi-fold side access cover for those tighter print locations. Ideal for tags, RFID tags, labels, and signage. **Call your SATO Authorized Master Reseller for compatible ribbons, tags, labels and additional information.**



ITEM	DESCRIPTION	PRINTER	QTY PACK	PRINTER WEIGHT	LIST PRICE	U/M
WWCLP1001**	Standard, CL4NX Plus, 4.1" Thermal Transfer Printer, 203 dpi	●	1	33 LB	\$1,995.00	EA
WWCLP2001**	Standard, CL4NX Plus, 4.1" Thermal Transfer Printer, 305 dpi	●	1	33 LB	\$2,445.00	EA
WWCLP3001**	Standard, CL4NX Plus, 4.1" Thermal Transfer Printer, 609 dpi	●	1	33 LB	\$3,526.00	EA

CL4NX included interfaces (standard): Parallel, LAN, RS232, NFC, USB & External I/O. ** RFID available optional.

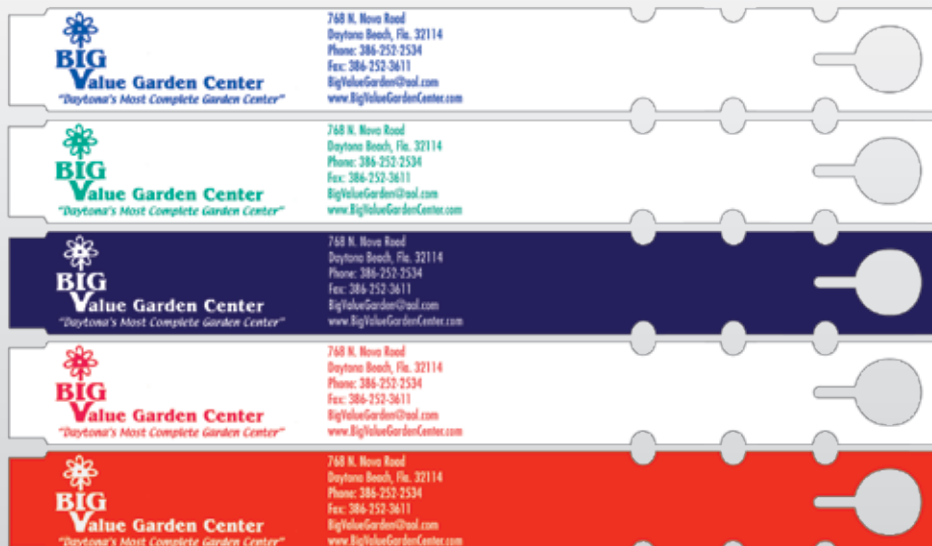
ITEM	DESCRIPTION	PRINTER	QTY PACK	PRINTER WEIGHT	LIST PRICE	U/M
WWCLPA001**	Standard, CL6NX Plus, 6.6" Thermal Transfer Printer, 203 dpi	●	1	44 LB	\$3,495.00	EA
WWCLPB001**	Standard, CL6NX Plus, 6.6" Thermal Transfer Printer, 305 dpi	●	1	44 LB	\$3,995.00	EA

CL6NX included interfaces (standard): Parallel, LAN, RS232, NFC, USB & External I/O. ** RFID available optional

ITEM	DESCRIPTION	PRINTER	QTY PACK	PRINTER WEIGHT	LIST PRICE	U/M
WWCLP5700	UHF RFID & RTC (Real Time Clock) Kit (CL4NX)	-	-	-	\$2,095.00	EA
WWCLPD700	UHF RFID & RTC (Real Time Clock) Kit (CL6NX)	-	-	-	\$2,255.00	EA

Thermal Transfer Ribbon

ITEM NO.	PRINTER	DESCRIPTION	ROLL/WIDTH	QTY/CASE	WEIGHT/CASE	LIST PRICE	U/M
SWR10-S-106600	●	T113I Wax/Resin 4" Industrial All Purpose Ribbon 1969' (106mm x 600m)	4.17"	12	18 LB	\$41.18	RL
SWR10-S-131600	●	T113I Wax/Resin 5" Industrial All Purpose Ribbon 1969' (131mm x 600m)	5.16"	12	22 LB	\$50.60	RL
SWR10-S-152600	●	T113I Wax/Resin 6" Industrial All Purpose Ribbon 1969' (152mm x 600m)	6"	12	26 LB	\$56.72	RL
SWR05-H-110100		T102E Wax/Resin CG408 Desktop Ribbon 328' (110mm x 100m)	4.33"	6	2 LB	\$7.97	RL
SR605(CLRS)	●	T113I Wax/Resin Color Ribbon 984' (131mm x 300m)	5.16"	12	12 LB	\$44.64	RL
SR605RE	●	C132AR Resin Red Ribbon 984' (131mm x 300m)	5.16"	12	12 LB	\$49.10	RL
SR655MW	●	T112F Wax/Resin Metallic White Ribbon 984' (131mm x 300m)	5.16"	12	12 LB	\$44.64	RL
SR606(CLRS)	●	T113I Wax/Resin Color Ribbon 984' (152mm x 300m)	6"	12	15 LB	\$48.10	RL
SR606RE	●	C132AR Resin Red Ribbon 984' (152mm x 300m)	6"	12	15 LB	\$52.91	RL
SR656MW	●	T112F Wax/Resin Metallic White Ribbon 984' (152mm x 300m)	6"	12	15 LB	\$48.10	RL
SWR10-K-110300	●	T111L Wax/Resin WS4 Desktop Ribbon 984' (110mm x 300m)	4.33"	12	9 LB	\$24.96	RL
SWR10-K-109410	●	T111L Wax/Resin Industrial Ribbon 1345' (109mm x 410m)	4.3"	12	13 LB	\$32.31	RL
SWR10-K-171410	●	T111L Wax/Resin Industrial Ribbon 1345' (171mm x 410m)	6.75"	12	19 LB	\$53.16	RL



BLUE

GREEN

WHITE

RED

METALIC
WHITE

- Prints up to 6.5" on a 7" web (material width). Fits most SATO printers. Print width may vary. ● Prints up to 6" on a 10" web (material width). TXPEX6
- Prints up to 4" on a 4.5" web (material width). CL4NX Plus - WS4

Thermal Printheads

ITEM NO.	QTY PACK	PRINTER	DESCRIPTION	LIST PRICE
TEC9104	1		4" Replacement Printhead for TXP/TEC SX series printer	\$399.00
TEC9105	1		5" Replacement Printhead for TXP/TEC SX series printer	\$674.00
TEC9130	1	●	6" Replacement Printhead 305 DPI for EX6 printer	\$690.00
R14464020	1		4" Replacement Printhead for CG408 series printer	\$129.00
R37901800	1	●	CL4NX Plus Print Head (4.1" - 203 dpi)	\$492.00
R37901900	1	●	CL4NX Plus Print Head (4.1" - 305 dpi)	\$595.00
R37902000	1	●	CL4NX Plus Print Head (4.1" - 609 dpi)	\$1,397.00
R38747500	1	●	CL6NX Plus Print Head (6.5" - 203 dpi)	\$543.00
R38747600	1	●	CL6NX Plus Print Head (6.5" - 305 dpi)	\$854.00
WT205-001	1	●	Print Head (203dpi) WS408TT	\$129.00
WT301-001	1	●	Print Head (300dpi) WS412TT	\$259.00

Thermal Accessories

ITEM NO.	QTY PACK	PRINTER	DESCRIPTION	LIST PRICE
T7100	1	● ● ●	Head Cleaning Pen	\$3.00
TXPCOVER	1	●	TXP Series Printer Cover	\$42.00
59-C2103-011	1	● ● ●	Optional External Unwinder	\$35.00
14S000156	26	● ● ●	Cleaning Kit for TT Printers (1 Print Head cleaning sheet; 12 adhesive remover swabs; 12 presaturated cleaning cards, 1 glove)	\$55.00
14S000145	100	● ● ●	E-Z Wipes for Thermal Printers	\$45.00

14S000156



14S000145



TAGGIT® Pro Labeling Design Software and Database

SATO TAGGIT® Pro is the right label design software to meet your on-demand label printing program requirements. The SATO Team will analyze your needs, assist with installation, perform database modifications to ensure your label printing settings are correct. TAGGIT® Pro allows you to create, design, and print bar codes, text, graphic images, color images or from a database on tags.

- Microsoft ready
- Batch printing
- Database creation, connection, and queries
- Simply add barcodes, images, text (TrueType fonts,) and preset formats for all our labels and graphics
- Free phone support 704-644-1660
- Includes 4,500 preloaded plant database that is Customizable.

LABEL DESIGN SOFTWARE			
Item No.	Product	Function	List Price
TAG22PRO1	TAGGIT® PRO 22 KEYLESS	Graphic & Native Barcodes,TCP/IP Printing, Unicode Font Support, etc.	\$595.00
TAG22RFID1	TAGGIT® RFID 22 KEYLESS	Plus Job Modifier, Form Designer & Viewer, Text Management with RFID Function	\$1,295.00

TAGGIT® UPGRADES			
Item No.	Product	Function	List Price
TAGPRO22UPG*	TAGGIT® PRO 22 STD UPGRADE	TAGGIT® Pro 17 to TAGGIT® Pro 22 Keyless	\$359.00
TAGRFID22UPG*	TAGGIT® RFID 22 STD UPGRADE	TAGGIT® Gold 17 to TAGGIT® RFID 22 Keyless	\$695.00
TAGPRORFIDUPG*	TAGGIT® RFID 22 LVL UPGRADE	TAGGIT® Pro 22 to TAGGIT® RFID 22 Keyless	\$695.00
TAGPRORFID22UPG*	TAGGIT® RFID 22 ADV UPGRADE	TAGGIT® Pro 17 to TAGGIT® RFID 22 Keyless	\$975.00

* Valid TAGGIT® Serial Number required with order. NOTE: RFID option is not available in the trial edition. TAGGIT® PRO Gold features require a product license key.



TAGGIT® PRO 22

A **SATO** Brand

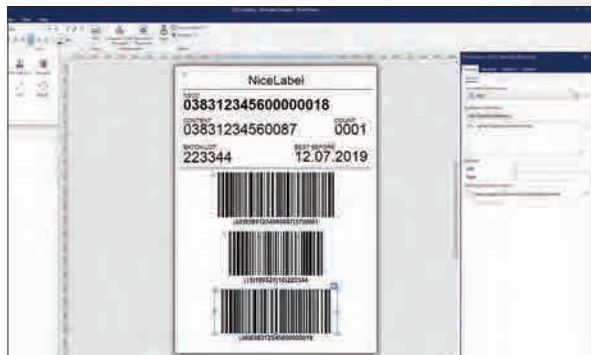


WANT A FREE 30 DAY TRIAL OF THIS SOFTWARE?

Go to the site below, and click on current software file.

<http://horticulture.satoamerica.com/software.aspx>

Loftware NiceLabel



**Want a free 30 day trial
of this software?**

Contact your SATO sales representative to begin

Quickly Design and Print Barcode Labels Without IT Help

Get started and finished with label design today. Loftware Cloud delivers a familiar Microsoft Word-like user experience. This means anyone can quickly design professional labels without previous knowledge of barcoding or designer training. [Learn more about label design.](#)

Print accurately and consistently without printing errors. Printing labels with dynamic data is different from printing other types of documents. The labeling system needs to enable production and warehouse staff to print quickly and without errors. Loftware comes with an all-in-one printing form that helps users print accurate labels without the risk of error. [Learn more about error-free label printing.*](#)

Design & Print - Loftware Cloud Designer

ITEM NO.	PRODUCT	LIST PRICE / YEARLY	FUNCTION
WNDBA001Y002	Cloud Designer 1 Printer	\$390.00	Database Functionality

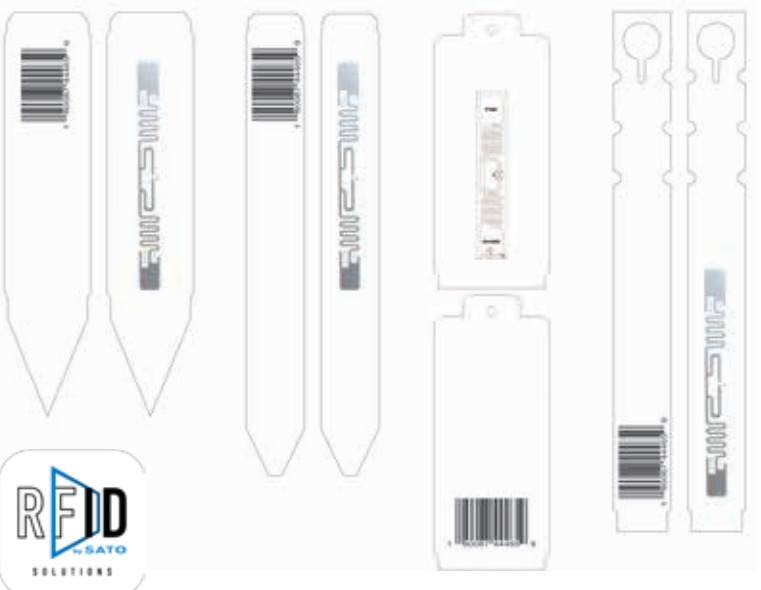
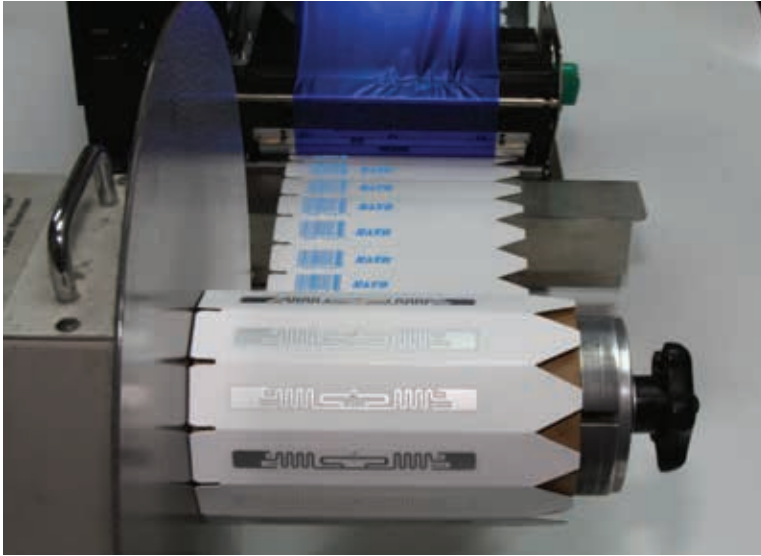
* Annual Subscription

SATO Horticultural RFID Solutions

RFID Tagging is an ID system that uses radio frequency for object identification and tracking purposes. A radio frequency identification (RFID) system includes:

- An RFID tag – an antenna with an integrated circuit, IC for data storage and communication with the RFID reader.
- A read/write device
- A host application for data collection, storage, processing and or transmission.

RFID uses radio waves to automatically identify and track the tags containing electronically stored information attached to plants or inserted into pots.



The SATO RFID solution allows growers to track and store data about their products. Fitting every shelf, row or plant with a RFID tag, growers will be able to monitor stages and progress of potentially every plant in a greenhouse.

Beyond the greenhouse, shipping containers with RFID identification will enable tracking, from the crop to the market.

In addition to tracking, a RFID system provides information such as place of origin or date of harvest.

Thermal Printing (T)

Thermal printing is a system whereby heating of ribbon transfers print onto the surface of the print material.

Print Charges

Print less than 1"
 Print 1" or greater
 End to End, Laser and Pressure Sensitive

1-Side

\$10.50/M
 \$14.50/M
 Quote

2-Side

\$20.50/M
 \$26.25/M
 Quote

*1000 min per variety.

Setup Charges

Straight Line Copy \$3.00/VAR.
 Logo setup from provided artwork \$40.00/EA.
 Logos and Artwork \$80.00/HR.
 UPC Code or Barcode \$3.00/EA.
 Consecutive Numbering \$10.00/M
 Print color other than Black \$5.75/M



Flexographic Printing (F)

Often abbreviated to flexo, this is a method of printing most commonly used for packaging. A flexo print is achieved by creating a mirrored master of the required image as a 3D relief in a rubber or polymer material. A measured amount of ink is deposited upon the surface of the printing plate (or printing cylinder) using an anilox roll. The print surface then rotates, contacting the print material which transfers the ink.

Print Charges

Flexo printing - Call for quotation.

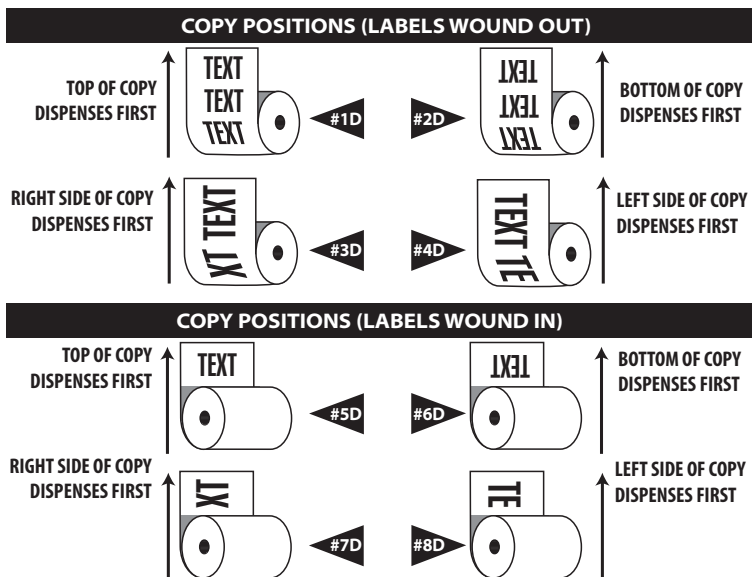
Setup Charges

Plate Setup Charges may apply

PMS colors

Additional charge for colors not listed.

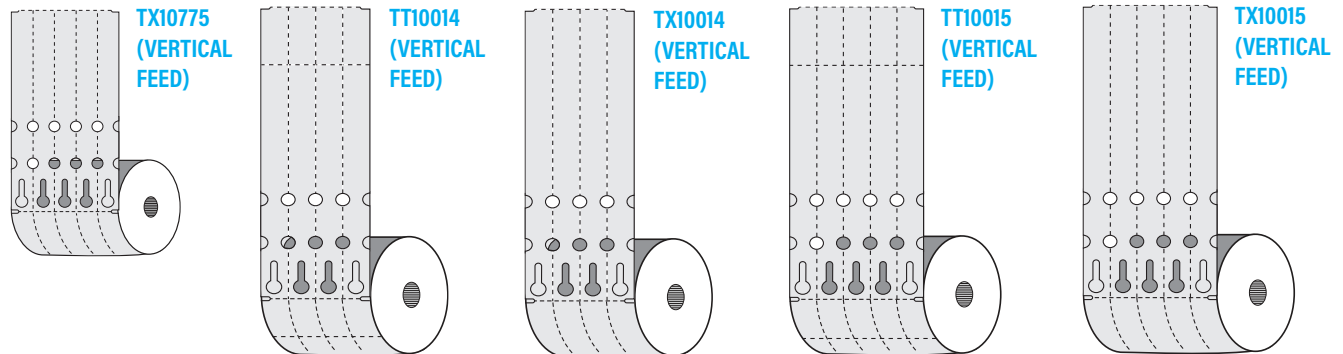
STANDARD LABEL DISPENSING DIRECTIONS



Thermal Slip-On® End to End Tags

SATO-TRANSFER 410 LDPE 10-MIL (TX, TT)

Our Thermal Slip-On® tags are a great way of identifying your product. Once locked, it will stay on the plant material until removed, and thermal print adheres well. The dry printing process means tags are ready to use as they come off the printer. Our Thermal Slip-On® tags can be preprinted flexographically during the manufacturing process or with the thermal transfer printing method.



COLOR OPTIONS: WH YE

ITEM NO.	PRINTER	SIZE	NO. ACROSS	TYPE OF PREPRINT	QTY ROLL/ CASE	WEIGHT/ CASE	4M	8M	16M	48M	96M
TX10775	● ● ●	3/4 x 7	5	T,F	2M / 16M	28 LB	\$40.89	\$36.28	\$26.21	\$23.49	\$20.97
TT10014	● ● ●	1 x 10 w/ 2" tear-off	4	T,F	1M / 8M	27 LB	\$57.19	\$50.73	\$36.66	\$32.85	\$29.33
TT10015	● ●	1 x 10 w/ 2" tear-off	5	T,F	2M / 8M	26 LB	\$58.37	\$51.78	\$37.42	\$33.52	\$29.93
TX10014	● ● ●	1 x 10 (4" WEB)	4	T,F	1M / 8M	27 LB	\$62.43	\$55.39	\$40.02	\$35.86	\$32.02
TX10015	● ●	1 x 10 (5" WEB)	5	T,F	2M / 8M	26 LB	\$66.19	\$58.73	\$42.43	\$38.02	\$33.95

COLOR OPTIONS: RE OR TN LI GR TU BU LA PU PI

ITEM NO.	PRINTER	SIZE	NO. ACROSS	TYPE OF PREPRINT	QTY ROLL/ CASE	WEIGHT/ CASE	4M	8M	16M	48M	96M
TX10775	● ● ●	3/4 x 7	5	T,F	2M / 16M	28 LB	\$47.00	\$41.69	\$30.13	\$26.99	\$24.10
TT10014	● ● ●	1 x 10 w/ 2" tear-off	4	T,F	1M / 8M	27 LB	\$65.76	\$58.35	\$42.16	\$37.77	\$33.73
TT10015	● ●	1 x 10 w/ 2" tear-off	5	T,F	2M / 8M	26 LB	\$67.16	\$59.58	\$43.05	\$38.58	\$34.44

M = 1,000

Minimum order: Roll quantity - 1000 per variety; Setup and printing charges will apply -- See page 9 for more information or call your SATO Authorized Master Reseller for quote.

Please call for 96M+ pricing.

● Prints up to 6.5" on a 7" web (material width). Fits most SATO printers. Print width may vary. ● Prints up to 6" on a 10" web (material width). TXPEX6
● Prints up to 4" on a 4.5" web (material width). CL4NX Plus - WS4

Thermal Slip-On® Tags

SATO-TRANSFER 410 LDPE 10-MIL (TX, TT)

Our Thermal Slip-On® tags are a great way of identifying your product. Once locked, it will stay on the plant material until removed, and thermal slip adheres well. The dry printing process means tags are ready to use as they come off the printer. Our Thermal Slip-On® tags can be preprinted with the thermal transfer printing method.



(HORIZONTAL FEED) TX1055T

(HORIZONTAL FEED) TT1091T

(HORIZONTAL FEED) TX1075T - TX1077T - TX1071T
- TX1091T - TX1097T



COLOR OPTIONS: WH YE

ITEM NO.	PRINTER	SIZE	NO. ACROSS	TYPE OF PREPRINT	QTY ROLL/ CASE	WEIGHT/ CASE	4M	8M	16M	48M	96M
TX1055T	● ●	1/2 x 5	1	T	4M / 16M	14 LB	\$24.55	\$21.78	\$15.74	\$14.10	\$12.59
TX1075T	● ●	1/2 x 7	1	T	2M / 16M	19 LB	\$28.99	\$25.72	\$18.59	\$16.65	\$14.87
TX1077T	● ●	3/4 x 7	1	T	2M / 10M	19 LB	\$39.09	\$34.68	\$25.06	\$22.45	\$20.04
TX1097T	●	3/4 x 9	1	T	2M / 10M	24 LB	\$46.03	\$40.83	\$29.51	\$26.44	\$23.60
TT1097T (WH ONLY)	●	3/4 x 9 w / 17/8" tear off	1	T	2M / 10M	24 LB	\$46.03	\$40.83	\$29.51	\$26.44	\$23.60
TX1071T	● ●	1 x 7	1	T,F	2M / 10M	23 LB	\$46.60	\$41.34	\$29.87	\$26.77	\$23.90
TX1091T	●	1 x 9	1	T,F	2M / 10M	30 LB	\$55.59	\$49.32	\$35.63	\$31.93	\$28.51
TT1091T	●	1 x 9 w / 17/8" tear off	1	T,F	2M / 10M	30 LB	\$55.59	\$49.32	\$35.63	\$31.93	\$28.51

COLOR OPTIONS: RE OR TN LI GR TU BU LA PU PI

ITEM NO.	PRINTER	SIZE	NO. ACROSS	TYPE OF PREPRINT	QTY ROLL/ CASE	WEIGHT/ CASE	4M	8M	16M	48M	96M
TX1055T	● ●	1/2 x 5	1	T	4M / 16M	14 LB	\$28.24	\$25.05	\$18.10	\$16.22	\$14.48
TX1075T	● ●	1/2 x 7	1	T	2M / 16M	19 LB	\$33.37	\$29.61	\$21.39	\$19.17	\$17.12
TX1077T	● ●	3/4 x 7	1	T	2M / 10M	19 LB	\$44.94	\$39.87	\$28.81	\$25.81	\$23.05
TX1097T	●	3/4 x 9	1	T	2M / 10M	24 LB	\$52.91	\$46.94	\$33.92	\$30.39	\$27.13
TX1071T	● ●	1 x 7	1	T,F	2M / 10M	23 LB	\$53.62	\$47.57	\$34.37	\$30.80	\$27.50
TX1091T	●	1 x 9	1	T,F	2M / 10M	30 LB	\$63.96	\$56.75	\$41.00	\$36.74	\$32.80
TT1091T	●	1 x 9 w / 17/8" tear off	1	T,F	2M / 10M	30 LB	\$63.96	\$56.75	\$41.00	\$36.74	\$32.80

M = 1,000

Minimum order: Roll quantity - 1000 per variety, Setup and printing charges will apply -- See page 9 for more information or call your SATO Authorized Master Reseller for quote.

Please call for 96M+ pricing.

● Prints up to 6.5" on a 7" web (material width). Fits most SATO printers. Print width may vary. ● Prints up to 6" on a 10" web (material width). TXPEX6

● Prints up to 4" on a 4.5" web (material width). CL4NX Plus - WS4

Thermal Pot Tags

SATO-TRANSFER 700 STYRENE 13-MIL (ZX WHITE MATERIAL ONLY),
SATO-TRANSFER 700 STYRENE 20-MIL (SX), SATO-TRANSFER 400 POLYPROPYLENE 23-MIL (PX)

Our Thermal Pot Tags can be preprinted on all materials listed using thermal transfer printing method, thermal print adheres well. The dry printing process means tags are ready to use as they come off the printer. Only ZX 13mil Styrene can be printed flexographically as well.



Styrene Material (ZX) and Styrene Material (SX) 

Heavy Plastic Material (PX) 

COLOR OPTIONS: WH

ITEM NO.	PRINTER	SIZE	NO. ACROSS	TYPE OF PREPRINT	QTY ROLL / CASE	WEIGHT / CASE	4M	8M	16M	48M	96M
ZX5135T		1/2 X 3	1	T	5M/20M	15 LB	\$23.08	\$20.47	\$14.79	\$13.26	\$11.84
ZX5156T		9/16 X 5	1	T,F	2M/20M	29 LB	\$29.55	\$26.21	\$18.94	\$16.97	\$15.15
ZX5157T		3/4 X 5	1	T,F	2M/12M	22 LB	\$34.03	\$30.19	\$21.81	\$19.55	\$17.45
ZX5141T		1 X 4-1/2	1	T,F	2M/16M	35 LB	\$41.31	\$36.65	\$26.48	\$23.73	\$21.18
ZX5152T		1-1/2 X 5	1	T,F	1M/10M	35 LB	\$66.76	\$59.23	\$42.80	\$38.35	\$34.24

SX5146T		9/16 X 4	1	T	2M/16M	24 LB	\$36.26	\$32.17	\$23.24	\$20.83	\$18.60
SX5156T		9/16 X 5	1	T	2M/8M	17 LB	\$38.05	\$33.75	\$24.39	\$21.85	\$19.51
SH5157T		3/4 x 5 w/ 1/8" hole at point	1	T	2M/8M	22 LB	\$42.83	\$38.00	\$27.46	\$24.60	\$21.96
SX5157T		3/4 X 5	1	T	2M/8M	22 LB	\$42.83	\$38.00	\$27.46	\$24.60	\$21.96
SX5167T		3/4 X 6	1	T	2M/8M	27 LB	\$49.30	\$43.74	\$31.60	\$28.32	\$25.28
SX5151T		1 X 5	1	T	1M/8M	32 LB	\$51.63	\$45.81	\$33.10	\$29.66	\$26.48
SX5161T		1 X 6	1	T	1M/4M	20 LB	\$60.76	\$53.90	\$38.95	\$34.90	\$31.16
SX5181T		1 X 8	1	T	1M/4M	27 LB	\$76.05	\$67.47	\$48.75	\$43.68	\$39.00
SX5152T		1-1/2 X 5	1	T	1M/4M	22 LB	\$81.51	\$72.31	\$52.25	\$46.81	\$41.80

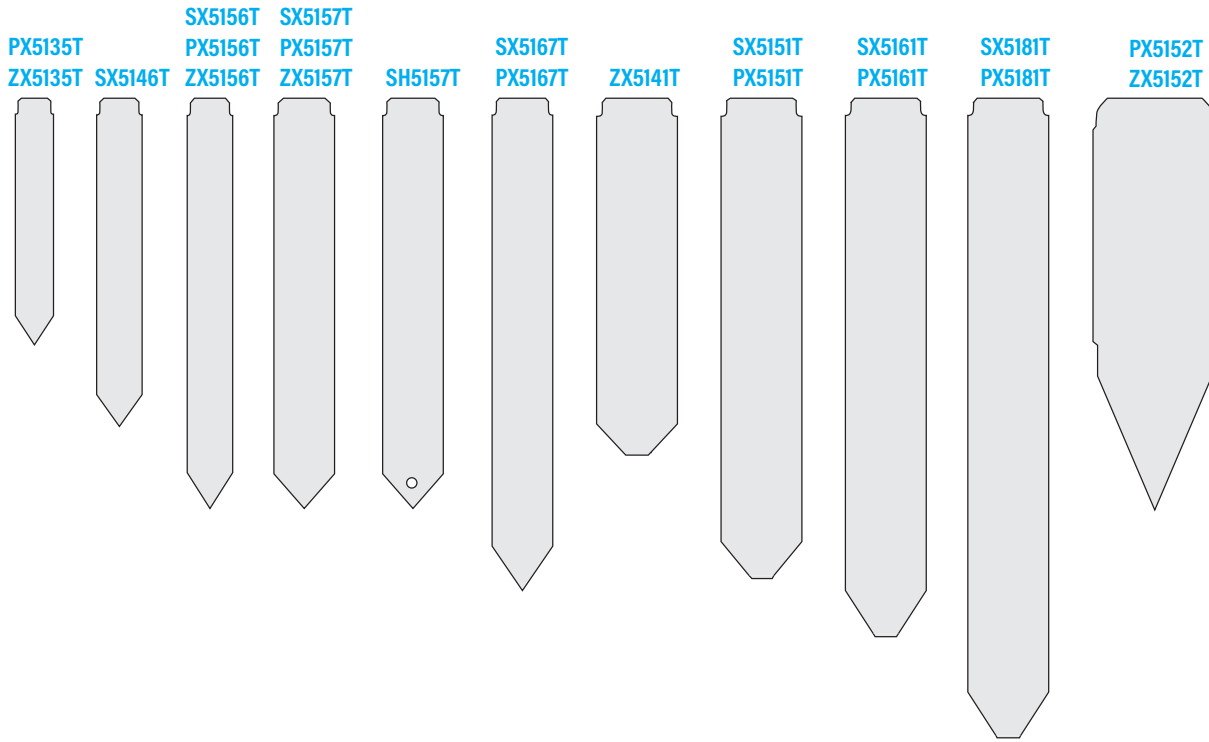
PX5135T		1/2 X 3	1	T	2M/12M	15 LB	\$28.72	\$25.48	\$18.41	\$16.49	\$14.73
PX5156T		9/16 X 5	1	T	2M/8M	17 LB	\$41.15	\$36.51	\$26.38	\$23.63	\$21.10
PX5157T		3/4 X 5	1	T	2M/8M	22 LB	\$48.08	\$42.66	\$30.82	\$27.62	\$24.66
PX5167T		3/4 X 6	1	T	2M/8M	27 LB	\$53.97	\$47.88	\$34.59	\$31.00	\$27.67
PX5151T		1 X 5	1	T	1M/8M	32 LB	\$60.96	\$54.08	\$39.08	\$35.01	\$31.26
PX5161T		1 X 6	1	T	1M/4M	20 LB	\$70.17	\$62.25	\$44.98	\$40.30	\$35.98
PX5181T		1 X 8	1	T	1M/4M	27 LB	\$88.66	\$78.66	\$56.84	\$50.93	\$45.47
PX5152T		1-1/2 X 5	1	T	1M/4M	22 LB	\$88.95	\$78.91	\$57.02	\$51.09	\$45.61
PX5172T		1-1/2 X 7	1	T	1M/4M	31 LB	\$106.69	\$94.66	\$68.39	\$61.28	\$54.71

M = 1,000

Minimum order: Roll quantity - 1000 per variety, Setup and printing charges will apply -- See page 9 for more information or call your SATO Authorized Master Reseller for quote.

Please call for 96M+ pricing.

Prints up to 6.5" on a 7" web (material width). Fits most SATO printers. Print width may vary. Prints up to 6" on a 10" web (material width). TXPEX6
 Prints up to 4" on a 4.5" web (material width). CL4NX Plus - WS4

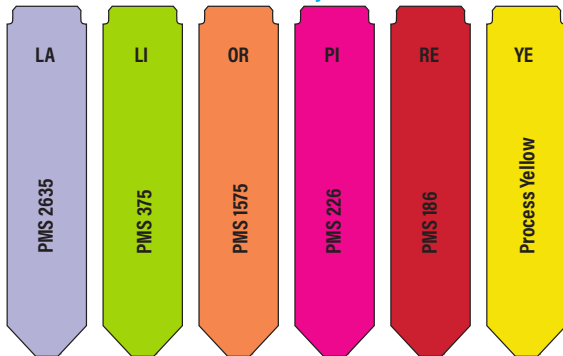


COLOR OPTIONS: RE OR YE TN LI TU LA PI

ITEM NO.	PRINTER	SIZE	NO. ACROSS	TYPE OF PREPRINT	QTY ROLL/ CASE	WEIGHT/ CASE	4M	8M	16M	48M	96M
PX5135T	●	1/2 X 3	1	T	2M/12M	15 LB	\$33.04	\$29.31	\$21.18	\$18.97	\$16.94
PX5156T	●	9/16 X 5	1	T	2M/8M	17 LB	\$47.33	\$41.99	\$30.34	\$27.19	\$24.27
PX5157T	●	3/4 X 5	1	T	2M/8M	22 LB	\$54.21	\$48.09	\$34.75	\$31.14	\$27.80
PX5167T	●	3/4 X 6	1	T	2M/8M	27 LB	\$62.08	\$55.07	\$39.79	\$35.65	\$31.83
PX5151T	●	1 X 5	1	T	1M/8M	32 LB	\$70.07	\$62.16	\$44.92	\$40.24	\$35.93
PX5161T	●	1 X 6	1	T	1M/4M	20 LB	\$80.73	\$71.63	\$51.75	\$46.37	\$41.40
PX5181T	●	1 X 8	1	T	1M/4M	27 LB	\$102.01	\$90.50	\$65.39	\$58.59	\$52.31
PX5152T	●	1-1/2 X 5	1	T	1M/4M	22 LB	\$102.29	\$90.75	\$65.57	\$58.75	\$52.46

Minimum order: Roll quantity - 1000 per variety, Setup and printing charges will apply -- See page 9 for more information or call your SATO Authorized Master Reseller for quote. M = 1,000
Please call for 96M+ pricing.

ZX5141T Floodcoated one side only



ITEM NO.	PRINTER	SIZE	NO. ACROSS	TYPE OF PREPRINT	QTY ROLL/ CASE	WEIGHT/ CASE
ZX5141T	●●●	1 X 4-1/2	1	T,F	2M/16M	35 LB

M = 1,000

Minimum order: Roll quantity - 1000 per variety, Setup and printing charges will apply -- See page 9 for more information or call your SATO Authorized Master Reseller for quote.

Please call for 96M+ pricing.

- Prints up to 6.5" on a 7" web (material width). Fits most SATO printers. Print width may vary.
- Prints up to 6" on a 10" web (material width). TXPEX6
- Prints up to 4" on a 4.5" web (material width). CL4NX Plus - WS4

Thermal Sta-Loc™ Hang Tags

SATO-TRANSFER 400 POLYPROPYLENE 23-MIL (PX)

Our Thermal Sta-Loc™ Hang Tags can be preprinted using the thermal transfer printing method.



PX2351T



PX2361T



COLOR OPTIONS: WH

ITEM NO.	PRINTER	SIZE	NO. ACROSS	TYPE OF PREPRINT	QTY ROLL/ CASE	WEIGHT/ CASE	4M	8M	16M	48M	96M
PX2351T	●	1 X 5	1	T	1M / 4M	17 LB	\$69.84	\$61.96	\$44.77	\$40.12	\$35.82
PX2361T	●	1 X 6	1	T	1M / 4M	20 LB	\$83.21	\$73.82	\$53.34	\$47.79	\$42.67

COLOR OPTIONS: RE OR YE TN LI TU LA PI

ITEM NO.	PRINTER	SIZE	NO. ACROSS	TYPE OF PREPRINT	QTY ROLL/ CASE	WEIGHT/ CASE	4M	8M	16M	48M	96M
PX2351T	●	1 X 5	1	T	1M / 4M	17 LB	\$80.33	\$71.27	\$51.49	\$46.14	\$41.19
PX2361T	●	1 X 6	1	T	1M / 4M	20 LB	\$95.64	\$84.85	\$61.31	\$54.93	\$49.05

M = 1,000

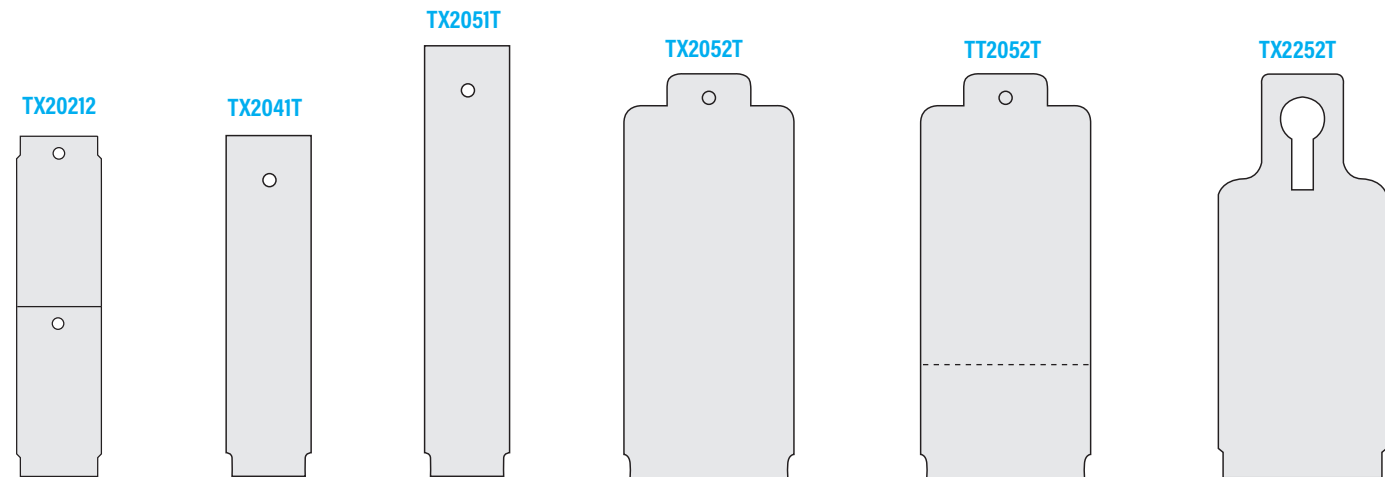
Minimum order: Roll quantity - 1000 per variety, Setup and printing charges will apply -- See page 9 for more information or call your SATO Authorized Master Reseller for quote.

Please call for 96M+ pricing.

Thermal Hang Tags

SATO-TRANSFER 410 LDPE 10-MIL (TX, TT)

Our Thermal Hang Tags can be preprinted flexographically during the manufacturing process or with the thermal transfer printing method.



COLOR OPTIONS: WH

ITEM NO.	PRINTER	SIZE	NO. ACROSS	TYPE OF PREPRINT	QTY ROLL / CASE	WEIGHT / CASE	4M	8M	16M	48M	96M
TX20212		1 x 2-1/8" w/ 1/8" hole	2	T,F	4M / 16M	13 LB	\$21.58	\$19.15	\$13.84	\$12.40	\$11.07
TX2041T		1 x 4 w/ 1/8" hole	1	T,F	2M / 18M	27 LB	\$42.14	\$37.38	\$27.01	\$24.20	\$21.61
TX2051T		1 x 5 w/ 1/8" hole	1	T,F	2M / 12M	21 LB	\$46.85	\$41.56	\$30.03	\$26.91	\$24.02
TX2052T		2 x 4-3/4 w/ 1/8" hole	1	T,F	1M / 10M	33 LB	\$70.82	\$62.83	\$45.40	\$40.67	\$36.32
TT2052T		2 x 4-3/4 w/ 1/8" hole & 1-3/8 t/o	1	T,F	1M / 10M	33 LB	\$70.82	\$62.83	\$45.40	\$40.67	\$36.32
TX2252T		2 x 4-3/4 w/ keyhole	1	T,F	1M / 10M	30 LB	\$70.82	\$62.83	\$45.40	\$40.67	\$36.32

M = 1,000

Minimum order: Roll quantity - 1000 per variety, Setup and printing charges will apply -- See page 9 for more information or call your SATO Authorized Master Reseller for quote.

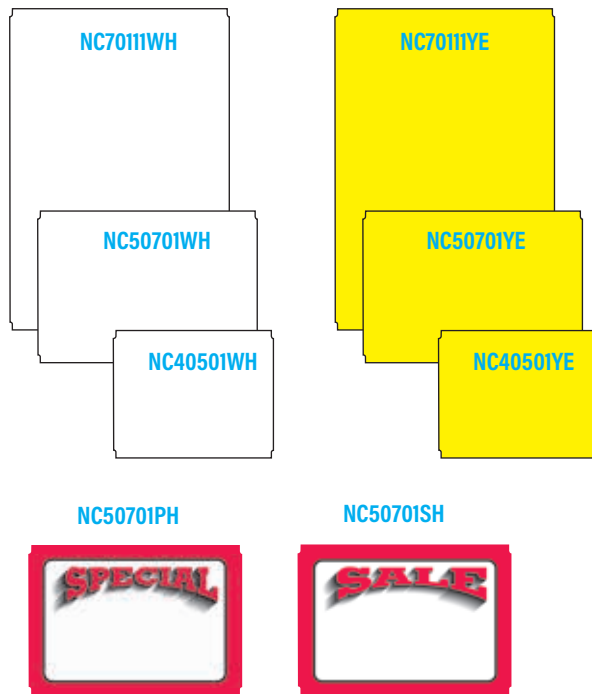
Please call for 96M+ pricing.

Prints up to 6.5" on a 7" web (material width). Fits most SATO printers. Print width may vary. Prints up to 6" on a 10" web (material width). TXPEX6
 Prints up to 4" on a 4.5" web (material width). CL4NX Plus - WS4

Thermal Rigid Signs

SATO-TRANSFER 400 C2S RIGID 10-MIL (NC)

Rigid material sign stock is ready for immediate insertion into the sign holders found on page 32.



COLOR OPTIONS: **WH**

ITEM NO.	PRINTER	STYLE	SIZE	NO. ACROSS	TYPE OF PREPRINT	QTY ROLL/CASE	WEIGHT/CASE	1C	5C	10C	25C
NC40501WH			4 x 5	1	T,F	1C / 16C 5C / 20C	13 LB 14 LB	\$24.12	\$19.90	\$16.28	\$14.47
NC50701WH			5 x 7	1	T,F	1C / 20C 5C / 20C	25 LB 25 LB	\$33.29	\$27.46	\$22.47	\$19.97
NC50701SH		Sale	5 x 7	1	T,F	1C / 20C	25 LB	\$45.89	\$37.86	\$30.98	\$27.53
NC50701PH		Special	5 x 7	1	T,F	1C / 20C	25 LB	\$45.89	\$37.86	\$30.98	\$27.53
NC7011WH			7 x 11	1	T,F	1C / 8C	22 LB	\$67.24	\$55.47	\$45.39	\$40.34

COLOR OPTIONS: **YE**

ITEM NO.	PRINTER	STYLE	SIZE	NO. ACROSS	TYPE OF PREPRINT	QTY ROLL/CASE	WEIGHT/CASE	1C	5C	10C	25C
NC40501YE			4 x 5	1	T,F	1C / 16C 5C / 20C	13 LB 14 LB	\$28.51	\$23.52	\$19.24	\$17.11
NC50701YE			5 x 7	1	T,F	1C / 20C 5C / 20C	25 LB 25 LB	\$39.87	\$32.89	\$26.91	\$23.92
NC7011YE			7 x 11	1	T,F	1C / 8C	22 LB	\$80.18	\$66.15	\$54.12	\$48.11

C = 100

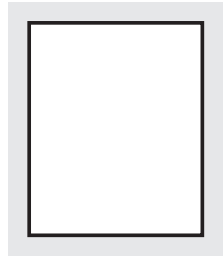
Call your SATO Authorized Master Reseller for quote -- Setup and printing charges will apply.

Thermal Pressure Sensitive Signs

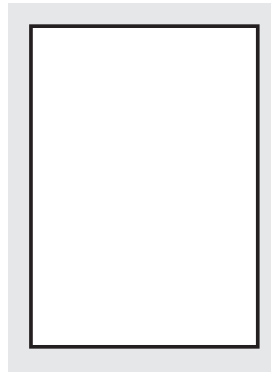
SATO-400 FLORATHERM (FT)

The floratherm material is designed with an aggressive adhesive with a face stock that resists water and sunlight while providing a superior thermal transfer print surface. The signs can be applied to smooth damp containers, flats, and trays. Signs may be printed with decorative borders and your company name or logo. Signs can also be flood coated to create additional color options.

FT40501WH



FT50701WH



COLOR OPTIONS: WH

ITEM NO.	PRINTER	SIZE (WXH)	NO. ACROSS	TYPE OF PREPRINT	*PERF	QTY ROLL/CASE	WEIGHT/CASE	1C	5C	10C	25C
FT40501WH	● ● ●	4 x 5	1	T,F	N	1C / 14C 5C / 30C	11 LB 18 LB	\$23.29	\$19.21	\$15.72	\$13.97
FT50701WH	● ●	5 x 7	1	T,F	H	1C / 24C 5C / 20C	27 LB 20 LB	\$33.36	\$27.52	\$22.52	\$20.02

*Perforation direction: L = Lineal, H = Horizontal, and N = None.

C = 100

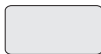
Call your SATO Authorized Master Reseller for quote -- Setup and printing charges will apply.

Thermal Transfer Pressure Sensitive Paper Labels

SATO-TRANSFER 200P

The face sheet is thermal receptive and can be floodcoated in various colors to be used in case labeling and for product identification in warehouses. The high-quality face sheet is coupled with an aggressive, permanent adhesive to ensure long-term adhesion of the label. If direct thermal printing is the preferred print method, SATO also offers direct thermal pressure sensitive paper labels for various applications.

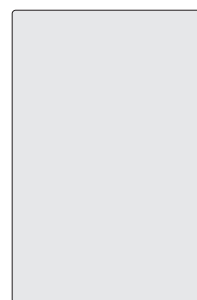
SR30LT-10038



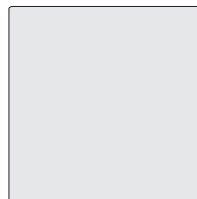
SR30LT-10039



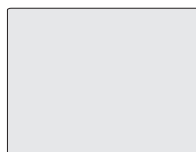
SR30LT-10059



SR30LT-10054



SR30LT-10052



SR30LT-10050



COLOR OPTIONS: WH

ITEM NO.	LEGACY	PRINTER	SIZE	NO. ACROSS	TYPE OF PREPRINT	QTY ROLL/CASE	WEIGHT/CASE
SR30LT-10038	L8TT1013R	● ● ●	2 x 1	1	T,F	5,190 EA / 51,900 EA	28 LB
SR30LT-10039	L8TT0016R	● ● ●	2 x 1	2	T,F	11,000 EA / 88,000 EA	46 LB
SR30LT-10050	L8TT0027R	● ● ●	4 x 2	1	T,F	2,740 EA / 10,960 EA	22 LB
SR30LT-10052	L8TT0022R	● ● ●	4 x 3	1	T,F	1,870 EA / 7,480 EA	22 LB
SR30LT-10054	L8TT0008R	● ● ●	4 x 4	1	T,F	1,410 EA / 5,640 EA	22 LB
SR30LT-10059	L8TT0004R	● ● ●	4 x 6	1	T,F	1,000 EA / 4,000 EA	23 LB

Call your SATO Authorized Master Reseller for quote -- Setup and printing charges will apply.

● Prints up to 6.5" on a 7" web (material width). Fits most SATO printers. Print width may vary. ● Prints up to 6" on a 10" web (material width). TXPEX6
● Prints up to 4" on a 4.5" web (material width). CL4NX Plus - WS4

Thermal Pressure Sensitive Labels

SATO-400 FLORATHERM (FT)

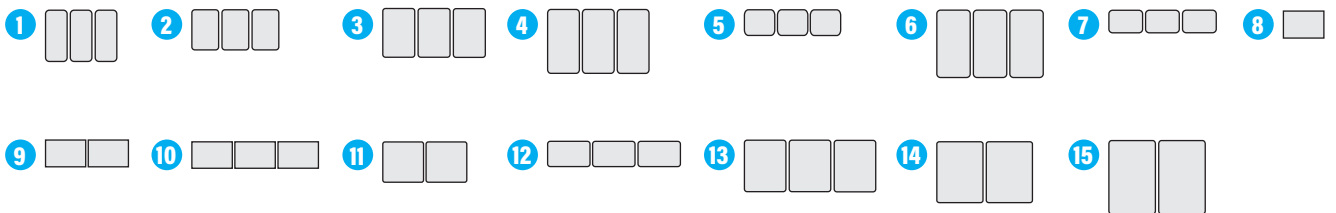
The floratherm material is designed with an aggressive adhesive with a face stock that resists water and sunlight while providing a superior thermal transfer print surface. The labels can be applied to smooth damp containers, flats, and trays. These labels can be preprinted flexographically during the manufacturing process or with the thermal transfer printing method. Labels are wound in.



COLOR OPTIONS: **WH**

ITEM NO.	PRINTER	SIZE	NO. ACROSS	TYPE OF PREPRINT	*PERF	QTY ROLL/ CASE	WEIGHT/ CASE	5M	10M	20M	50M	100M
1	FT07113WH	3/4 x 1-5/16	3	T,F	N	9M / 72M	25 LB	\$15.98	\$9.61	\$8.17	\$7.67	\$7.20
2	FT10153WH	1 x 1-1/2	3	T,F	N	9M / 36M	17 LB	\$15.26	\$9.18	\$7.81	\$7.33	\$6.88
3	FT11183WH	1-3/16 X 1-13/16	3	T,F	L	8M / 32M	21 LB	\$17.74	\$10.66	\$9.07	\$8.51	\$8.00
4	FT11233WH	1-3/16 x 2-3/8	3	T,F	N	6M / 24M	20 LB	\$20.76	\$12.48	\$10.62	\$9.97	\$9.36
5	FT12103WH	1-1/8 x 15/16	3	T,F	L	15M / 60M	19 LB	\$17.00	\$10.22	\$8.70	\$8.16	\$7.66
6	FT12253WH	1-1/4 x 2-1/2	3	T,F	H	6M / 24M	22 LB	\$15.26	\$9.18	\$7.81	\$7.33	\$6.88
7	FT12083WH	1-1/4 x 7/8	3	T,F	N	15M / 60M	21 LB	\$15.46	\$9.29	\$7.91	\$7.42	\$6.97
8	FT15101WH	1-1/2 x 1	1	T,F	N	5M / 60M	29 LB	\$16.45	\$9.89	\$8.41	\$7.89	\$7.41
9	FT15102WH	1-1/2 x 1	2	T,F	N	10M / 60M	27 LB	\$15.76	\$9.47	\$8.06	\$7.56	\$7.10
10	FT15103WH	1-1/2 x 1	3	T,F	N	15M / 60M	27 LB	\$15.26	\$9.18	\$7.81	\$7.33	\$6.88
11	FT15152WH	1-1/2 x 1-1/2	2	T,F	N	7M / 42M	28 LB	\$19.66	\$11.82	\$10.06	\$9.44	\$8.86
12	FT16103WH	1-9/16 x 15/16	3	T,F	L	15M / 60M	27 LB	\$14.71	\$8.85	\$7.53	\$7.06	\$6.63
13	FT16203WH	1-9/16 x 1-15/16	3	T,F	L	7M / 28M	26 LB	\$28.52	\$17.14	\$14.59	\$13.69	\$12.86
14	FT17222WH	1 3/4 x 2 1/4	2	T,F	H	4M / 16M	19 LB	\$28.71	\$17.26	\$14.69	\$13.78	\$12.94
15	FT17272WH	1-3/4 x 2-3/4	2	T,F	L	4M / 16M	22 LB	\$31.19	\$18.75	\$15.95	\$14.97	\$14.06

M = 1,000



*Perforation direction: L = Lineal, H = Horizontal, and N = None.

Setup and printing charges will apply -- See page 9 for more information or call your SATO Authorized Master Reseller for quote.



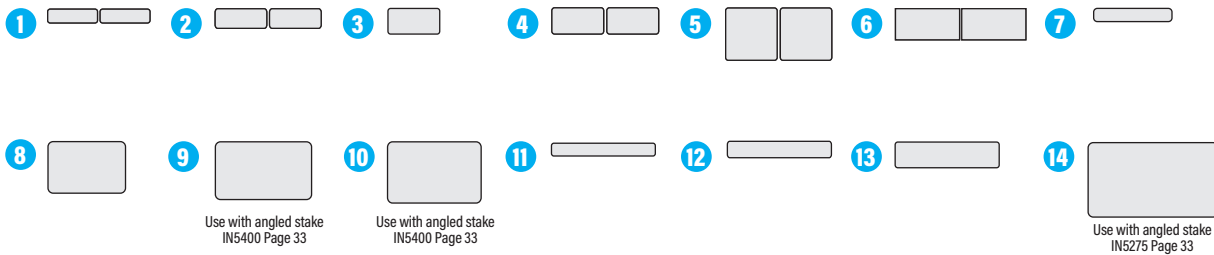
WS4
DESKTOP PRINTER



COLOR OPTIONS: WH

	ITEM NO.	PRINTER	SIZE	NO. ACROSS	TYPE OF PREPRINT	*PERF	QTY ROLL/ CASE	WEIGHT/ CASE	5M	10M	20M	50M	100M
1	FT20052WH	● ● ●	1-15/16 x 9/16	2	T,F	L	15M / 60M	21 LB	\$12.24	\$7.36	\$6.26	\$5.87	\$5.52
2	FT20072WH	● ● ●	2 x 3/4	2	T,F	N	12M / 48M	22 LB	\$15.74	\$9.46	\$8.05	\$7.56	\$7.10
3	FT20101WH	● ● ●	2 x 1	1	T,F	N	5M / 40M	24 LB	\$15.54	\$9.34	\$7.95	\$7.46	\$7.00
4	FT20102WH	● ● ●	2 x 1	2	T,F	L	10M / 40M	24 LB	\$13.26	\$7.97	\$6.78	\$6.36	\$5.98
5	FT20202WH	● ● ●	2 x 2	2	T,F	L	5M / 20M	23 LB	\$32.40	\$19.48	\$16.57	\$15.55	\$14.60
6	FT25122WH	● ●	2-1/2 x 1-1/4	2	T,F	L	8M / 32M	28 LB	\$25.52	\$15.34	\$13.06	\$12.25	\$11.50
7	FT30051WH	● ● ●	3 x 1/2	1	T,F	N	9M / 54M	26 LB	\$17.33	\$10.42	\$8.86	\$8.32	\$7.81
8	FT30201WH	● ● ●	3 x 2	1	T,F	H	2.5M / 15M	26 LB	\$56.87	\$34.19	\$29.09	\$27.30	\$25.64
9	FT37221WH	● ● ●	3-3/4 x 2-1/4	1	T,F	N	2M / 8M	20 LB	\$76.23	\$45.83	\$39.00	\$36.59	\$34.36
10	FT37251WH	● ● ●	3-5/8 x 2-3/8	1	T,F	N	2M / 8M	20 LB	\$86.85	\$52.21	\$44.43	\$41.69	\$39.15
11	FT40051WH	● ● ●	4 x 1/2	1	T,F	N	9M / 36M	22 LB	\$21.97	\$13.21	\$11.24	\$10.55	\$9.91
12	FT40061WH	● ● ●	4 x 5/8	1	T,F	N	5M / 20M	15 LB	\$23.29	\$14.00	\$11.92	\$11.18	\$10.50
13	FT40101WH	● ● ●	4 x 1	1	T,F	N	5M / 20M	23 LB	\$36.88	\$22.17	\$18.87	\$17.70	\$16.62
14	FT50281WH	● ●	5 x 2-7/8	1	T,F	N	1.875M / 75M	30 LB	\$113.08	\$67.98	\$57.85	\$54.28	\$50.98

M = 1,000



*Perforation direction: L = Lineal, H = Horizontal, and N = None.

Setup and printing charges will apply -- See page 9 for more information or call your SATO Authorized Master Reseller for quote.

- Prints up to 6.5" on a 7" web (material width). Fits most SATO printers. Print width may vary.
- Prints up to 6" on a 10" web (material width). TXPEX6
- Prints up to 4" on a 4.5" web (material width). CL4NX Plus - WS4

ENVIRONMENTALLY RUGGED RFID

With the SATO America rugged RFID tagging solutions, you can quickly identify the number and location of plants without manually counting each one. The tags are augmented with increased adhesion and RFID inlay durability, making our solution an even better fit for applications that require more strength and durability. Attach tags to individual plants efficiently tracking plant movements throughout the supply chain, from propagation to shipping. RFID readers can automatically capture plant data, reducing manual data entry errors and saving time. SATO America's rugged RFID solution is durable enough to exist in challenging environments.

Applications:

- Track growth parameters, disease susceptibility, and treatment history
- Available in pot stakes, hang tags, and slip-on tags

Recommended Printer:

TXPEX6 - RFID



Benefits:

- Monitor plant health
- Optimize growing conditions
- Trace product origins
- Improve operation efficiencies
- Reduce manual data entry
- Shipment validation

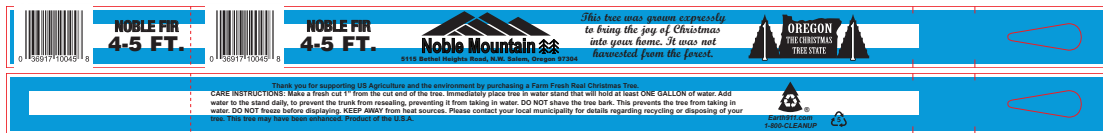


HOLIDAY TREE & WREATH TAGS!



See Page 37

SATO can help you prepare for the holidays! We offer custom tags perfect for your holiday trees, wreaths or garland. SATO can create and produce a variety of sizes and designs customized to fit your needs, including common industry sizes of 1" x 12" and 1" x 18". These tags can come with a perf-end, allowing customers to remove the portion of the tag with a barcode or QR code.



WHAT IS A QR CODE? HOW TO SCAN?

Basically, a QR code works in the same way as a barcode at the supermarket. It is a machine-scannable image that can instantly be read using a Smartphone camera. Every QR code consists of a number of black squares and dots which represent certain pieces of information.

How to scan a QR code with your iPhone, iPad, or iPod touch

1. Open the Camera app from the Home Screen, Control Center, or Lock Screen
2. Select the rear facing camera. Hold your device so that the QR code appears in the viewfinder in the Camera app.
3. Tap the notification to open the link associated with the QR code.

How to scan a QR code on your Android Phone

1. Press and hold the home button.
2. Then tap Lens
3. Point your camera at the QR code.
4. Then tap the magnifying glass icon to scan the QR code
5. Finally, tap the pop-up notification



Valueline Laser Printable Slip-On® Tags

SATO-LASER 400 UNC VALUELINE 8-MIL (VL)

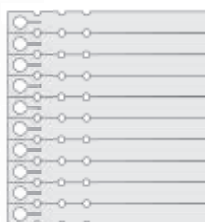
The Valueline Laser Printable product is a 8 mil material that is top coated on both sides to provide excellent imaging and longevity outdoors. Our Valueline is viable for all of your monochrome laser printing applications and a solution to most of your color laser printing applications. This laser printable material can cover almost all of your laser printing needs. Our laser Slip-On® tags may be preprinted with information such as company name, website, and logo for maximizing company visibility.



VLX1085SWH



VLX1081SWH



VLT1081SWH

With 1-3/4" Tear-off



VLX1011SWH



VLT1011SWH

With 1-3/4" Tear-off



COLOR OPTIONS:

WH

ITEM NO.	SIZE	TAGS PER SHEET	TYPE OF PREPRINT	QTY PACK/CASE	WEIGHT/CASE	1M	5M	10M	20M	50M
VLX1085SWH	1/2 x 8 1/2	20		1M / 15M	19 LB	\$50.96	\$43.37	\$40.69	\$38.21	\$35.74
VLX1081SWH	1 x 8-1/2	10	F	1M / 10M	31 LB	\$68.26	\$58.09	\$54.50	\$51.18	\$47.87
VLT1081SWH	1 x 8-1/2 w/ 1 3/4" tear-off	10	F	1M / 10M	31 LB	\$68.26	\$58.09	\$54.50	\$51.18	\$47.87
VLX1011SWH	1 x 11	8	F	1M / 5M	18 LB	\$90.82	\$77.29	\$72.51	\$68.10	\$63.69
VLT1011SWH	1 x 11 w/ 1 3/4" tear-off	8	F	1M / 5M	18 LB	\$90.82	\$77.29	\$72.51	\$68.10	\$63.69

M = 1,000

Minimum: 1,000 tags per artwork change. Setup and printing charges will apply - See page 9 for more information or call your SATO Authorized Master Reseller for quote.

NOTE: Due to the number of laser printers on the market, customers are requested to order a free sample packet to thoroughly test the printer they are considering using.

NOTE: Prices are per 1,000 tags.

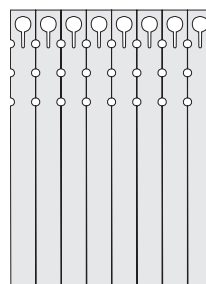
Superior Advantage Laser Printable Slip-On® Tags

SATO-LASER 400 UNC SUPERIOR ADVANTAGE 10-MIL (CL)

The Superior Advantage Laser printable product is a 10 mil material that is top coated on both sides to provide superior imaging and longevity outdoors. Our Superior Advantage gives excellent resolution in color laser printing applications and a solution to all of your color laser printing needs. Our laser Slip-On® tags may be preprinted with information such as company name, website, and logo for maximizing company visibility.

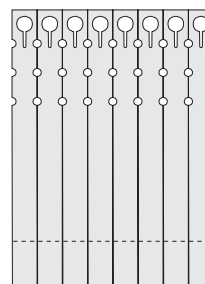


CLX1011SWH



CLT1011SWH

With 1-3/4" Tear-off



COLOR OPTIONS: WH

ITEM NO.	SIZE	TAGS PER SHEET	TYPE OF PREPRINT	QTY PACK/CASE	WEIGHT/CASE	1M	5M	10M	20M	50M
CLX1011SWH	1 x 11	8	F	1M / 5M	27 LB	\$110.94	\$94.41	\$88.58	\$83.19	\$77.80
CLT1011SWH	1 x 11 w/ 1 3/4" tear-off	8	F	1M / 5M	27 LB	\$110.94	\$94.41	\$88.58	\$83.19	\$77.80

M = 1,000

Minimum: 1,000 tags per artwork change. Setup and printing charges will apply - See page 9 for more information or call your SATO Authorized Master Reseller for quote.

NOTE: Due to the number of laser printers on the market, customers are requested to order a free sample packet to thoroughly test the printer they are considering using.

NOTE: Prices are per 1,000 tags.

Valueline Laser Printable Hang Tags

SATO-LASER 400 UNC VALUELINE 8-MIL (VL)

Valueline Laser Printable Hang Tags are 8 mil material that is top coated on both sides to provide superior imaging and longevity outdoors. Our Valueline is viable for all of your monochrome laser printing applications and a solution to most of your color printing applications. This laser printable material can cover almost all of your laser printing needs.



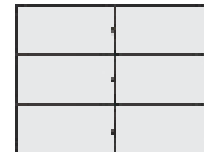
VLH2242SWH



VLH2842SWH



VLH2755SWH



COLOR OPTIONS: WH

ITEM NO.	SIZE	TAGS PER SHEET	TYPE OF PREPRINT	QTY PACK/CASE	WEIGHT/CASE	1M	5M	10M	20M	50M
VLH2242SWH (8.5"x11")	2.2 x 4.25	10	F	1M / 5M	16 LB	\$60.33	\$51.34	\$48.17	\$45.24	\$42.31
VLH2842SWH (8.5"x14")	2.8 x 4.25	10	F	1M / 5M	14 LB	\$66.37	\$56.48	\$52.99	\$49.77	\$46.55
VLH2755SWH (8.5"x11")	2.833 x 5.5	6	F	1M / 5M	21 LB	\$83.06	\$70.68	\$66.32	\$62.28	\$58.25

M = 1,000

Setup and printing charges will apply -- See page 9 for more information or call your SATO Authorized Master Reseller for quote.

NOTE: Due to the number of laser printers on the market, customers are requested to order a free sample packet to thoroughly test the printer they are considering using.

NOTE: Prices are per 1,000 tags.

Superior Advantage Laser Printable Hang Tags

SATO-LASER 400 UNC SUPERIOR ADVANTAGE 10-MIL (CL)

The Superior Advantage Laser printable product is a 10 mil material that is top coated on both sides to provide superior imaging and longevity outdoors. Our Superior Advantage gives excellent resolution in color printing applications and a solution to all of your color laser printing needs.



CLH2242SWH



CLH2842SWH



CLH2755SWH



COLOR OPTIONS: **WH**

ITEM NO.	SIZE	TAGS PER SHEET	TYPE OF PREPRINT	QTY PACK/CASE	WEIGHT/CASE	1M	5M	10M	20M	50M
CLH2242SWH (8.5"x11")	2.2 x 4.25	10	F	1M / 5M	17 LB	\$77.61	\$66.05	\$61.97	\$58.20	\$54.43
CLH2842SWH (8.5"x14")	2.8 x 4.25	10	F	1M / 5M	20 LB	\$100.39	\$85.42	\$80.15	\$75.27	\$70.40
CLH2755SWH (8.5"x11")	2.833 x 5.5	6	F	1M / 5M	28 LB	\$130.23	\$110.83	\$103.98	\$97.65	\$91.33

M = 1,000

Setup and printing charges will apply -- See page 9 for more information or call your SATO Authorized Master Reseller for quote.

NOTE: Due to the number of laser printers on the market, customers are requested to order a free sample packet to thoroughly test the printer they are considering using.

NOTE: Prices are per 1,000 tags.

Laser Printable Signs

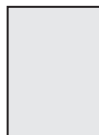
The material is top coated on both sides to provide superior imaging and longevity outdoors. It is available as sign stock in sizes up to 8-1/2 x 11 and may be printed with decorative frames, borders, logos, etc. Variable information can be printed with the laser printer. TAGGIT® Pro Label Software program now supports laser printers. Utilize your database and print barcodes with confidence. Sold in packages of 100 only! Laser signs can be custom preprinted with border, logo or flood coated.

Valueline Laser Printable Signs

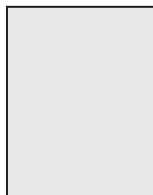
SATO-LASER 500 VALUELINE 7.5-MIL (VL)



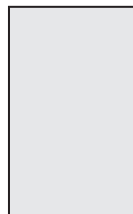
VLC5070B



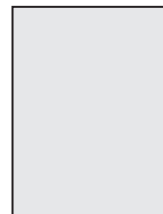
VLC8000B



VLC0711B



VLC1185B



COLOR OPTIONS: WH

ITEM NO.	SIZE	QTY PACK/CASE	WEIGHT/CASE	100	500	1000	2500	5000
VLC5070B	5 x 7	100 / 2000	27 LB	\$0.26	\$0.23	\$0.21	\$0.20	\$0.18
VLC0711B	7 x 11	100 / 1000	30 LB	\$0.50	\$0.44	\$0.41	\$0.38	\$0.35
VLC8000B	8 x 10	100 / 1000	31 LB	\$0.54	\$0.48	\$0.44	\$0.41	\$0.38
VLC1185B	8-1/2 x 11	100 / 500	15 LB	\$0.60	\$0.53	\$0.49	\$0.46	\$0.42

Setup and printing charges will apply -- See page 9 for more information or call your SATO Authorized Master Reseller for quote.

NOTE: Due to the number of laser printers on the market, customers are requested to order a free sample packet to thoroughly test the printer they are considering using.

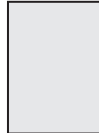
NOTE: Prices are per sign.

Superior Advantage Laser Printable Signs

SATO-LASER 500 SUPERIOR ADVANTAGE 10-MIL (CL)



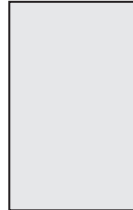
CLC5070B



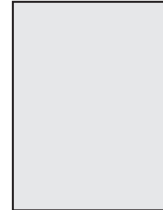
CLC8000B



CLC0711B



CLC1185B



COLOR OPTIONS: WH

ITEM NO.	SIZE	QTY PACK/CASE	WEIGHT/CASE	100	500	1000	2500	5000
CLC5070B	5 x 7	100 / 2000	30 LB	\$0.38	\$0.33	\$0.31	\$0.29	\$0.27
CLC0711B	7 x 11	100 / 1000	31 LB	\$0.75	\$0.66	\$0.61	\$0.57	\$0.53
CLC8000B	8 x 10	100 / 1000	33 LB	\$0.80	\$0.70	\$0.65	\$0.61	\$0.56
CLC1185B	8-1/2 x 11	100 / 500	20 LB	\$0.99	\$0.87	\$0.80	\$0.75	\$0.69

Setup and printing charges will apply -- See page 9 for more information or call your SATO Authorized Master Reseller for quote.

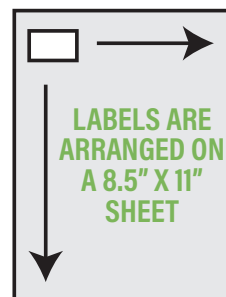
NOTE: Due to the number of laser printers on the market, customers are requested to order a free sample packet to thoroughly test the printer they are considering using.

NOTE: Prices are per sign.

Color Laser Printable Labels

SATO-LASER 480R (CLPS)

This high quality material is top coated to provide superior imaging in most desktop color laser printers. It allows the user to print monochrome and color with one product. The adhesive is aggressive and will adhere to most nursery containers. May be printed with decorative frames, borders, logos, etc. Variable information can be printed with the laser printer. TAGGIT® Pro Label Software program now supports laser printers.



COLOR OPTIONS: WH

	ITEM NO.	SIZE	LABELS PER SHEET	TYPE OF PREPRINT	QTY PACK/CASE	WEIGHT/ CASE	1M	5M	10M	20M
1	CLPS1112SWH	1-13/16 x 1-1/8	36	F	1M / 20M	27 LB	\$33.73	\$28.33	\$24.96	\$21.25
2	CLPS1020SWH	2 x 1	40	F	1M / 20M	27 LB	\$30.10	\$25.28	\$22.27	\$18.96
3	CLPS1225SWH	2-1/2 x 1-1/4	24	F	1M / 15M	28 LB	\$44.24	\$37.16	\$32.74	\$27.87
4	CLPS1726SWH	2-21/32 x 1-11/16	18	F	1M / 10M	25 LB	\$67.40	\$56.62	\$49.88	\$42.46
5	CLPS2537SWH	3-5/8 x 2-7/16	8	F	1M / 5M	26 LB	\$149.44	\$125.53	\$110.59	\$94.15
6	CLPS3040SWH	4 x 3	6	F	1M / 5M	33 LB	\$147.79	\$124.14	\$109.36	\$93.11

	ITEM NO.	SIZE	LABELS PER SHEET	TYPE OF PREPRINT	QTY PACK/CASE	WEIGHT/ CASE	1C	5C	10C	25C
7	CLPS5070SWH	7 x 5	2	F	1C / 10C	22 LB	\$49.69	\$45.22	\$38.26	\$35.28

	ITEM NO.	SIZE	LABELS PER SHEET	TYPE OF PREPRINT	QTY PACK/CASE	WEIGHT/ CASE	250	500	1000	2500
8	CLPS1185SWH	8-1/2 x 11	1	F	100EA / 500EA	20 LB	\$0.75	\$0.63	\$0.56	\$0.47

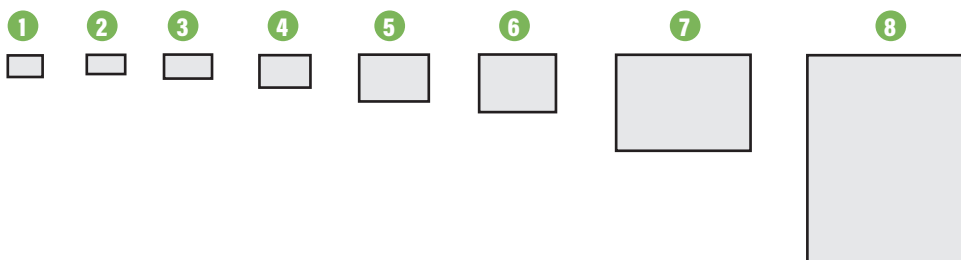
M = 1,000/C = 100

Call your SATO Authorized Master Reseller for quote -- Setup and printing charges will apply.

NOTE: Due to the number of laser printers on the market, customers are requested to order a free sample packet to thoroughly test the printer they are considering using.

NOTE: Prices are per u/m.

NOTE: For best results, remove matrix before printing.



4 Color Custom Signs

SATO-TRANSFER 500 8-MIL, SATO-TRANSFER 500 11-MIL



COLOR OPTIONS: WH

SIZE	MATERIAL	QTY PACK	WEIGHT/PACK	500	1000	2500	5000
5 x 4	8mil Poly	50	.50 lb	\$0.58	\$0.44	\$0.35	\$0.32
5 x 4	11mil Poly	50	.75 lb	\$0.63	\$0.51	\$0.43	\$0.38
7 x 5	8mil Poly	50	.90 lb	\$0.76	\$0.66	\$0.55	\$0.52
7 x 5	11mil Poly	50	1.30 lb	\$0.88	\$0.77	\$0.67	\$0.64
11 x 7	8mil Poly	50	2.00 lb	\$1.35	\$1.27	\$1.18	\$1.15
11 x 7	11mil Poly	50	2.85 lb	\$1.58	\$1.53	\$1.44	\$1.40

*Additional art charges may apply.

Custom Signs

SATO-TRANSFER 500 8-MIL, SATO-TRANSFER 500 11-MIL



Check out SATO's new custom garden signs selection for the very best in weatherproof signage. Whether you are a garden center, botanical garden, arboretum or wholesale nursery, you can use custom signage to build brand awareness, drive product promotions or educate the public. SATO offers endless supplies of plant pictures and custom designs to fit your needs.

COMPANY NAME

Botanical Name _____
Common Name _____

Classification Tree Shrub Vine Ground Cover Perennial

Bloom Time Spring Summer Fall Winter

Exposure Sun Shade Semi-Shade

Height _____
Spread _____

Type Deciduous Evergreen

Flower Color _____

\$ _____

Card #1 - PMS 3292

COMPANY NAME

Botanical Name _____
Common Name _____

Classification Tree Shrub Vine Ground Cover Perennial

Bloom Time Spring Summer Fall Winter

Exposure Sun Shade Semi-Shade

Type Deciduous Evergreen

Fall Color Red Orange Yellow None

Height _____
Spread _____

Berries Yes No Color _____

Flower Color _____

\$ _____

Card #2 - PMS 3292

COMPANY NAME

BOTANICAL NAME: _____
COMMON NAME: _____

HEIGHT: _____ EXPOSURE: _____
COLOR: _____ SPACING: _____
HABITS, ETC. _____ FLOWERING DATES: _____

PRICE

Card #3 - PMS Relex Blue

Company Name

Botanical Name _____
Common Name _____

Classification Tree Shrub Vine Ground Cover Perennial

Bloom Time Spring Summer Fall Winter

Exposure Sun Shade Semi-Shade

Height _____
Spread _____

Type Deciduous Evergreen

Flower Color _____

\$ _____

Card #4 - PMS 355

Company Name

Plant Name: _____

Type _____ Height _____ Bloom Time _____

Exposure _____ Spread _____ Flower Color _____

Notes: _____

Size: _____ Price: _____

Card #5 - PMS 715

COMPANY NAME

Botanical Name _____
Common Name _____

Classification Tree Shrub Vine Ground Cover Perennial

Bloom Time Spring Summer Fall Winter

Exposure Sun Shade Semi-Shade

Height _____
Spread _____

Type Deciduous Evergreen

Flower Color _____

\$ _____

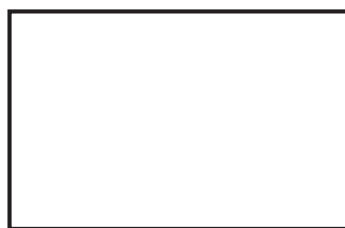
Card #6 - PMS 7424



5" x 4"



7" x 5"



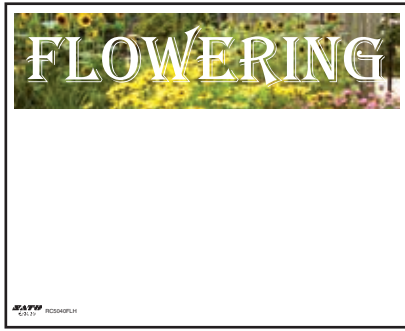
11" x 7"

COLOR OPTIONS: WH

SIZE	MATERIAL	QTY PACK	WEIGHT/PACK	500	1000	2500	5000
5 x 4	8mil Poly	50	.50 lb	\$0.67	\$0.49	\$0.38	\$0.35
5 x 4	11mil Poly	50	.75 lb	\$0.74	\$0.55	\$0.48	\$0.43
7 x 5	8mil Poly	50	.90 lb	\$0.89	\$0.72	\$0.61	\$0.57
7 x 5	11mil Poly	50	1.30 lb	\$1.03	\$0.84	\$0.74	\$0.71
11 x 7	8mil Poly	50	2.00 lb	\$1.58	\$1.40	\$1.30	\$1.27
11 x 7	11mil Poly	50	2.85 lb	\$1.86	\$1.69	\$1.58	\$1.53

Stock Signs

SATO-WRITABLE 410 HDPE 18-MIL



FLOWERING

Common Name _____

Botanical Name _____

Water Usage
 Low
 Medium
 High

Bloom Time
 Spring
 Summer
 Fall
 Winter

Exposure
 Sun
 Part sun
 Shade


Width x Height _____

Outstanding Features
 Native Attractor Attractor

Additional Information _____

Annual Perennial

Bloom Color _____



TREES & SHRUBS

Common Name _____

Botanical Name _____

Water Usage
 Low
 Medium
 High

Bloom Time
 Spring
 Summer
 Fall
 Winter

Exposure
 Sun
 Part sun
 Shade


Type
 Deciduous
 Evergreen

Width x Height _____

Berries _____

Bloom Color _____

Fall Foliage _____





5" x 4"



7" x 5"



11" x 7"

ITEM NO.	SIZE	ORIENTATION	TYPE OF PREPRINT	QTY PACK	WEIGHT/PACK	50	150	550
RC5040*	5 x 4	Horz	4color	25 EA	.40 LB	\$0.36	\$0.34	\$0.32
RC7050*	7 x 5	Horz	4color	25 EA	.65 LB	\$0.47	\$0.45	\$0.41
RC1107*	11 x 7	Horz	4color	25 EA	1.50 LB	\$0.88	\$0.84	\$0.77

*Varieties - Flowering (FLH), Special/Sale (SSH), Trees/Shrubs (TSH)

ITEM NO.	SIZE	ORIENTATION	TYPE OF PREPRINT	QTY PACK	WEIGHT/PACK	50	150	550
RC5040*	5 x 4	Horz	4color	25 EA	.40 LB	\$0.36	\$0.34	\$0.32
RC7050*	7 x 5	Horz	4color	25 EA	.65 LB	\$0.47	\$0.45	\$0.41
RC1107*	11 x 7	Horz	4color	25 EA	1.50 LB	\$0.88	\$0.84	\$0.77

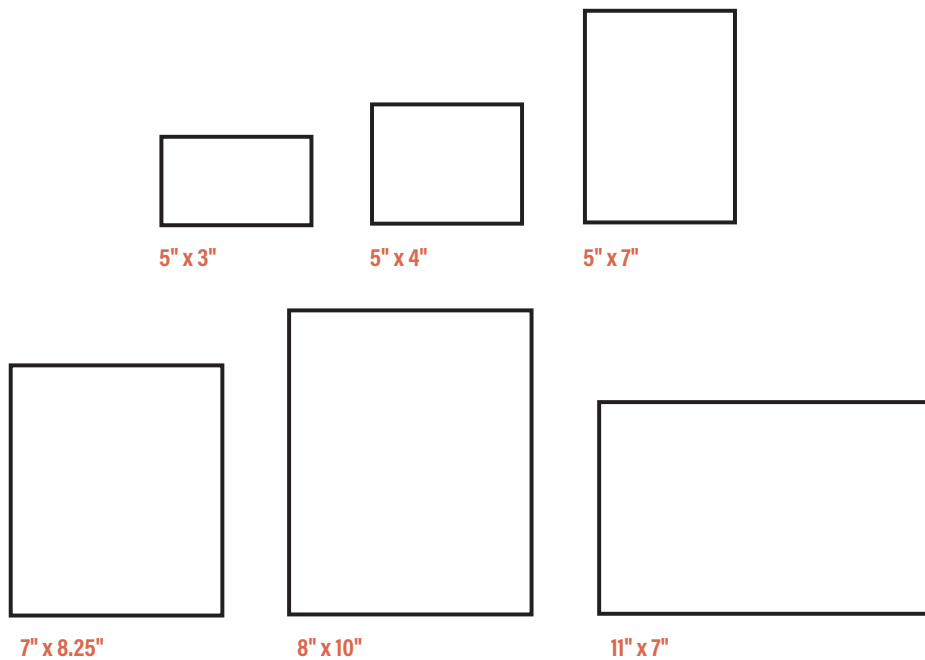
*Varieties with classification - Flowering (FLHC), Trees/Shrubs (TSHC)

Stock signs are prepackaged in bundles of 25.

Stock signs are priced per each.

Blank Signs

SATO-WRITABLE 480 RIGID VINYL 15-MIL



COLOR OPTIONS: **WH**

50	150	550
\$0.26	\$0.25	\$0.23
\$0.26	\$0.25	\$0.23
\$0.33	\$0.31	\$0.29
\$0.48	\$0.46	\$0.42
\$0.57	\$0.54	\$0.50
\$0.57	\$0.54	\$0.50

COLOR OPTIONS: **YE**

50	150	550
\$0.33	\$0.31	\$0.29
\$0.33	\$0.31	\$0.29
\$0.40	\$0.38	\$0.35
\$0.55	\$0.52	\$0.48
\$0.64	\$0.61	\$0.56
\$0.64	\$0.61	\$0.56

Blank signs are prepackaged in bundles of 50.

Blank signs are priced per each.

Galvanized Sign Holders

These signholders and markers are great for identifying plants and advertising specials. They utilize top-locking bars to hold signs in place. Can be a great way to display signs shown on pages 16, 26, 28, 29, 30, and 31.



ITEM NO.	ORIENTATION	SIZE	STAKE LENGTH	QTY PER CASE	WEIGHT/ PER CASE	25 - 100	150+
FM5040H18	Horz	5 x 4	18"	50	20 LB	\$3.00	\$2.67
FM7050H18	Horz	7 x 5	18"	50	23 LB	\$3.14	\$2.79
FM1107H18	Horz	11 x 7	18"	25	22 LB	\$3.94	\$3.50
FM5040H36	Horz	5 x 4	36"	50	31 LB	\$3.95	\$3.52
FM7050H36	Horz	7 x 5	36"	50	35 LB	\$4.13	\$3.68
FM1107H36	Horz	11 x 7	36"	50	60 LB	\$4.66	\$4.15
FH5040	Face Only	5 x 4		50	8 LB	\$1.07	\$0.93
FH7050	Face Only	7 x 5		50	14 LB	\$1.32	\$1.15
FH1107	Face Only	11 x 7		50	30 LB	\$2.37	\$2.07
FB1010	Base	10 x 10		25	38 LB	\$8.12	\$7.10

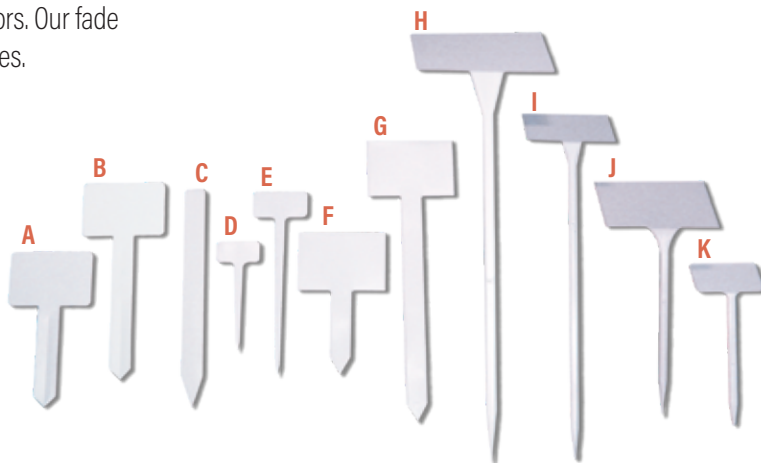
T-Stakes and Injection Molded Stakes

T-Stakes are produced from 30 mil white polystyrene for easy insertion into most soil. They may be purchased blank or preprinted in one or two colors. Our fade resistant pens (See pg. 34) can be used to write on these stakes.

Injection Molded Stakes are made of heavy-duty plastic from 55 mil to 70 mil thicknesses. These stakes are sturdy enough to be inserted into most mediums. Surfaces accept writing with fade resistant marking pens. (See pg. 34)

Pressure Sensitive Labels are available for most injection molded stakes.

Please see pages 18 and 19 for appropriate labels.



T-Stakes

COLOR OPTIONS: WH

ITEM NO.	TAG	SIZE	STAKE LENGTH	QTY PACK/CASE	WEIGHT/CASE	1C	10C	50C	100C
HS3370BWH	A	2.5 x 3.75	4.5"	1C / 30C	46 LB	\$25.38	\$20.33	\$18.48	\$16.60
HS3395BWH	B	2.5 x 3.75	6.5"	1C / 20C	40 LB	\$32.24	\$25.79	\$23.47	\$21.54

Minimum order for printed stakes: 1,000 per variety. Call for quote.

Injection Molded Stakes

COLOR OPTIONS: WH

ITEM NO.	TAG	SIZE	STAKE LENGTH	QTY PACK/CASE	WEIGHT/CASE	1C	10C	50C	100C
IN5016WH	C	1 x 9.75		1C / 10C	27 LB	\$36.53	\$24.48	\$23.20	\$21.22
IN5019WH	D	1 x 2	4"	1C / 10C	8 LB	\$26.58	\$17.81	\$16.88	\$15.44
IN5020WH	E	1.25 x 2.50	7"	1C / 10C	17 LB	\$33.21	\$22.25	\$21.09	\$19.30

COLOR OPTIONS: WH

ITEM NO.	TAG	SIZE	STAKE LENGTH	QTY PACK/CASE	WEIGHT/CASE	50 EA	100 EA	500 EA	1000 EA	3000 EA
IN5022WH	F	2.75 x 4	3.75"	50 / 1000	39 LB	\$0.66	\$0.59	\$0.54	\$0.52	\$0.50
IN5021WH	G	2.75 x 4	10"	50 / 500	29 LB	\$0.71	\$0.63	\$0.58	\$0.56	\$0.53

Angled Injection Molded Stakes

COLOR OPTIONS: WH

ITEM NO.	TAG	SIZE	STAKE LENGTH	QTY/CASE	WEIGHT/CASE	50 EA	200 EA	500 EA
IN5500WH	H	6.25 x 3.9375	17.25"	25	4 LB	\$1.22	\$1.15	\$1.08
IN5400WH	I	4 x 2.5	14"	50	4 LB	\$0.84	\$0.79	\$0.75
IN5275WH	J	5.188 x 3.188	8.25"	50	3 LB	\$0.84	\$0.79	\$0.75
IN5190WH	K	3.125 x 2	5.75"	50	3 LB	\$0.58	\$0.55	\$0.52

Available in YE - Yellow and BK - Black, please call your SATO Authorized Reseller for quote.

Blackboard Markers

Our Blackboard Injection Stakes are made of heavy-duty polypropylene. Plants, flats, or groupings can be individualized with waterproof pens in 8 colors, plus gold. Waterproof ink can be erased with isopropyl alcohol, enabling you to reuse them time and again.



COLOR OPTIONS: **BK**

ITEM NO.	SIZE	STAKE LENGTH	QTY PER CASE	WEIGHT PER CASE	100 EA	1000 EA	5000 EA	10000 EA
IN5035BB	5 x 3.15	15"	50	5 LB	\$1.69	\$1.13	\$1.07	\$0.98
IN6240BB	6.3 x 4	20.9"	25	4 LB	\$2.31	\$1.55	\$1.47	\$1.34

Weatherproof Pens

Posterman Basic Pen. A product for marking nursery signs, this pen is waterproof once it dries. For use only with the blackboard injection stakes shown above.

COLOR OPTIONS: **BK**

ITEM NO.	QUANTITY PER BOX	1-9	10+
PMA30B	12 EA	\$3.50	\$3.26

COLOR OPTIONS: **METALIC GOLD**

ITEM NO.	QUANTITY PER BOX	1-9	10+
PMA30MG	12 EA	\$3.50	\$3.26

COLOR OPTIONS: **WH**

ITEM NO.	QUANTITY PER BOX	1-9	10+
PMA30W	12 EA	\$3.50	\$3.26

COLOR OPTIONS: 8 COLORS

ITEM NO.	QUANTITY PER BOX	1-9	10+
PMA308VP	1 PK	\$27.00	\$25.11

PMA308VP



Allflex Tag Pen

For professional nurserymen and propagators. Two different tips included: broad and fine.

COLOR OPTIONS: **BK**

ITEM NO.	QUANTITY PER BOX	1-9	10+
8001	20 EA	\$9.32	\$8.88

Identi-Pen Double Tip

This pen writes well on all thermal materials (TX, TT, SX, ZX and PX). The 4 pack includes one Black, Blue, Red and Green pens.

COLOR OPTIONS: **BK**

ITEM NO.	QUANTITY PER BOX	
44101	12 EA	\$2.18 EA

COLOR OPTIONS: 4 COLORS

ITEM NO.	QUANTITY PER BOX	
44161	6 PACKS PER BOX	\$8.00 PK

Wrap-Around Ties

Wrap-Around Plant Ties: At 8" long, these ties can be attached together to form longer ties. A soft tie is available for tender plants; a hard tie for more rugged applications.



Wrap-Around Tree Ties: A heavy-duty, 14.5" long tie with locking fastener; 4" maximum diameter. Available in super-strong hard poly.

COLOR OPTIONS: **BK**

ITEM NO.		SIZE	QTY PACK	WEIGHT/CASE	1M	5M	10M	20M	50M
PS6083X		8"	1M / 30M	1.25 LB / 37 LB	\$18.20	\$16.87	\$16.00	\$15.42	\$14.98
PH6083X		8"	1M / 30M	1.25 LB / 37 LB	\$15.92	\$14.76	\$13.99	\$13.48	\$13.10
PX6047X		14.5"	1M / 8M	5.75 LB / 47 LB	\$74.90	\$69.43	\$65.84	\$63.44	\$61.64

M = 1,000

ID Tags (Permanent Locking)

Randomly numbered on white, yellow, red, orange, and blue material. Tags are 3/8" tall x 7" long and may be imprinted with one line of text on one side in black or white.

COLOR OPTIONS: **WH** **BL** **RE** **OR** **YE**

ITEM NO.	SIZE	QTY BAG / CASE	WEIGHT/CASE	100	500	1,000	5,000	10,000
PID	7"	100 EA /1,000 EA	11 LB	\$0.52 EA	\$0.46 EA	\$0.40 EA	\$0.34 EA	\$0.28 EA
PID* PRINT	7"	100 EA /1,000 EA	11 LB	-	-	\$0.51 EA	\$0.43 EA	\$0.35 EA

*Imprinted 1 Color (please allow 3 weeks) Minimum order of 1000 per color.

Imprinted text max. 19 characters including spaces and consecutive numbering 4 to 7 digits.



Hanging SOLD Tags

Hanging HDPE SOLD tag available in white with red print or red with black print. (Ties not included)

ITEM NO.	COLOR	SIZE	QTY PACK/CASE	WEIGHT/CASE	1C	10C	50C	100C
RC2753RE	Red w/Black Print	2.75 x 5.5625	1C / 30C	28 LB	\$16.65	\$11.66	\$10.66	\$10.16
RC2753WH	White w/Red Print	2.75 x 5.5625	1C / 30C	28 LB	\$16.65	\$11.66	\$10.66	\$10.16

C = 100

For customized printing call your SATO Authorized Master Reseller for a quote. Sold in pkg. qty. of 100.



Slip-On® SOLD Tags

Slip-On® SOLD Tags are available in red tag with black print.

ITEM NO.	COLOR	SIZE	QTY ROLL/CASE	WEIGHT/CASE	1M
TX1077SRB	Red Tag w/Black Print	.75 x 7	1M / 9M	19 LB	\$46.13

M = 1,000

For customized tags, please call your SATO Authorized Master Reseller for quote.



Handheld Labeling

SATO offers a variety of one and two line Handheld Labeling Systems, ideal for low and high-volume users. They allow you to mark thousands of items quickly and reliably. Used for price marking, mark downs, lot/batch coding and work-in-process the applications are endless. Stock, color and custom preprinted labels are available.



ITEM NO.	DESCRIPTION
WA2010523	PB2-180
PB2180WHTMT	PB2-180 Label
WB9002013	Ink Roller - Black

WAABA1007	KENDO 22.8 Unit-Price Tool
22KWHTMT	Kendo 22.8 Label
WADBA1006	JUDO 22.16 Tool
22JWHTMT	JUDO 22.16 Label
WAFBA3016	JUDO 26.20 Tool
26JWHTMT	JUDO 26.20 Label
WB9011030	Ink Roller - Black



SATO Kendo, Judo, and PB-2

- Offers a wide variety of print formats
- One and two line handheld labelers
- Label feed slots ensure positive registration
- Print band options for all types of applications
- Reliable and versatile handheld labeling solutions



Ringer and Rings

The ringer has revolutionized the auto-ringer market with its "pneumatic-like" action and ease of use. From balling and burlapping, to tagging of pots, this tool puts affordability with quality. The "D" shaped ring creates a triangle "△" when attached.

G7 Auto Ringer and Rings

The application of the self-feeding principle to the familiar hog ring plier meets a need that all users of this fastening method have been waiting for. The auto ringer cuts operating time and costs, and increases savings and profits. A very useful tool on every job within the range of this staple size. The SR8GPL rings for the G7PL are galvanized. The "C" shaped ring creates a circle "○" when attached.



ITEM NO.	DESCRIPTION	SIZE	QTY PACK	WEIGHT/CASE	1-4	5-9	10-19	20+
515DG50	Hog Ring 15GA	9/16"	2500	2.9 LB	\$28.54	\$27.11	\$24.26	\$22.83
RINGER	Pliers	9/16"	1	1.3 LB	\$113.53	\$104.11	\$101.20	\$97.52
SR8GPL	Hog Ring 16GA	11/16"	2500	2.3 LB	\$34.06	\$24.25	\$22.00	\$20.67
G7PL	Pliers	11/16"	1	.8 LB	\$61.15	\$56.07	\$50.94	\$47.88

Custom Solutions

Take charge of your tag, pot stake, and labeling needs. Choose from the diverse array of horticulture solutions offered by SATO. Designed to enhance the customer purchasing experience, we offer an extensive library of eye-catching designs and the versatility of many product branding and identification options.

Custom Marketing & POP Material

The Horticulture division of SATO America develops solutions that solve challenges and help customers increase sales.

Custom marketing programs tailored for your specific products combine container labels, custom design tags and point-of-purchase (POP) materials to achieve merchandising strategies aimed at generating turns.



Combo Printing

HANG TAG COMBO SIZES



D249B

2.75" x 5"

.1875" Punch hole strung or unstrung



D133

3" x 6"

.1875" Punch hole strung or unstrung



D74

2.5" x 4.25"

.1875" Punch hole strung or unstrung

POT STAKE COMBO SIZES



D19

1.875" x 5.75"



D230

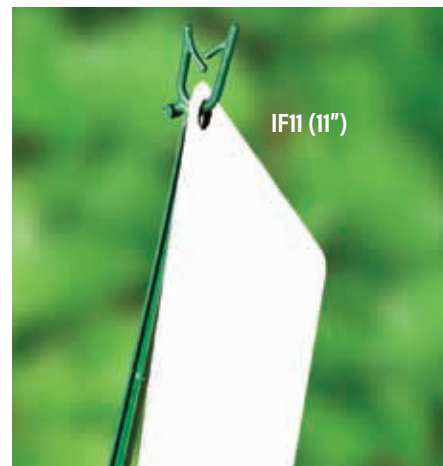
2" x 6.25"

COMBINE WITH OTHER PRINT RUNS TO TAKE ADVANTAGE OF BIG SAVINGS!

ASK ABOUT CURRENT COMBOS

Info Sticks

Easily display your custom hang tags with Info Sticks. Sold in box quantity increments.



IF11 (11")

ITEM NO.	SIZE	QTY / CASE	WEIGHT / CASE	1M
IF11	11"	5000	39 LB	\$60.00

M = 1,000

Pressure-sensitive labels, tickets, and tags

- Full range of paper, film, and adhesive options
- Up to 7 colors including 4-color process
- Full color Digital UV print
- Digital color management system
- Spot and full coverage water and UV varnish
- Full and pattern adhesive coating
- Inline lamination and Integrated Forms
- Tamper-evident labels
- Inline variable data printing
- In-house prepress and art departments
- Packaged in rolls, fan-fold, sheets, or stacks



Simply SATO - 2" x 4" Hang Tags (Thermal Imprintable)

SATO-TRANSFER 200 C2S 10-MIL

Economical tags that offer the combination of variably imprinted information with preprinted graphics and custom branding.

ITEM NO.	VARIETY	CARE INSTRUCTIONS - BACK	SIZE	QTY PER ROLL / CASE	WEIGHT/CASE	8M
PT2040TFLA	Floral	Arrangement	2 x 4	2M / 8M	23 LB	\$34.39
PT2040TFLA2	Floral 2	Arrangement	2 x 4	2M / 8M	23 LB	\$34.39
PT2040TORA	Orchid	Orchids	2 x 4	2M / 8M	23 LB	\$34.39
PT2040TCHA	Christmas	Arrangement	2 x 4	2M / 8M	23 LB	\$34.39
PT2040TVLA2	Valentine's	Arrangement	2 x 4	2M / 8M	23 LB	\$34.39

M = 1,000

Call your SATO Authorized Master Reseller for additional available designs.



Tree Wraps - Custom

SATO-FLEXO 410 HDPE 4-MIL

Custom printed tree wraps, 10" x 12" and 10" x 18". Printed up to three colors featuring your company logo, care information, and planting instructions. Just wrap and staple, no messy glue strips to contend with.



Grow with the Four Seasons of SATO



PLANT	SEASON
Bare-Root Roses	Early Winter
Berried Hollies	Winter
Hellebores	Winter
Shrubby Honeysuckles	Winter
Mahonias	Winter
Wintersweet	Winter
Winter Pansies	Winter
Crocuses	Winter
Tuberous Begonias	Late Winter
Busy Lizzies	Late Winter
Sweat Peas	Late Winter
Lilies	Early Spring
Onions	Early Spring
Celery	Early Spring
Dahlias	Spring
Cannas	Spring
Crown Imperials	Spring
Aquilegia Vulgaris	Spring
Perennials	Spring
Shrubs	Spring
Basil	Spring
Tomato	Spring
Broccoli	Spring
Melon	Spring

PLANT	SEASON
Corn	Spring
Kale	Spring
Cabbage	Spring
Peas	Spring
Annuals	Early Summer
Pelargoniums	Early Summer
Lobelia	Early Summer
Stocks	Early Summer
Petunias	Early Summer
Verbena	Early Summer
Fuchsias	Early Summer
Begonias	Early Summer
Cucumber	Early Summer
Pumpkin	Early Summer
Peppers	Early Summer
Daffodils	Autumn
Snowdrops	Autumn
Alliums	Autumn
Container-Grown Trees	Autumn
Shrubs	Autumn
Climbers	Autumn
Roses	Autumn
Tulips	Late Autumn
Bare-Root Plants	Late Autumn

The Economy - A SATO Brand Story

Before 1953, "state-of-the-art" plant identification was a white plastic stake and a magic marker. Then along came Economy Label Sales - inventor of the Slip-On® tag. While the technology awed and amazed, decades later it became even more impressive when Economy introduced thermal printed plant tags, a process which truly transformed the landscape of horticulture marketing.



Meanwhile in Japan, Yo Sato, who established SATO in 1940 to manufacture and sell packaging machinery, was developing his own innovative technologies including one of the first hand labelers in 1962 and the world's first thermal transfer label printer in 1979. Today, SATO America manufactures innovative, reliable auto-identification systems and offers complete solutions to businesses by integrating hardware, software, media supplies and maintenance services.

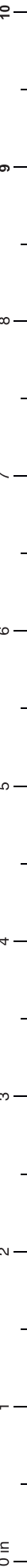
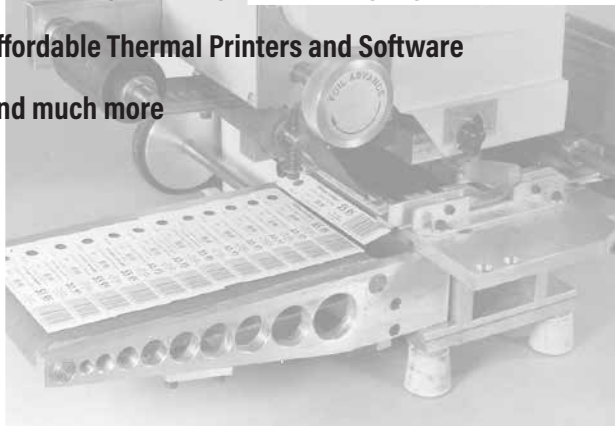
From the beginning, both companies were on parallel paths to leadership in their respective industries: Economy in horticulture and SATO in printing solutions.

Over the years, tagging and labeling has grown to critical proportion for horticulture production and marketing requirements. Today, tracking, shipping, merchandising, marketing and the transactional accounting of plant material are synonymous with profitability.

So, it seems only natural that two industry leaders would come together under the Horticultural Division of SATO America, LLC.

And the rest is history. Economy Labels & Tags - a SATO Brand - specializes in developing and perfecting the solutions that help retailers and growers to flourish, including but not limited to:

- Slip-On® Tags, Pot Tags, Labels, Signage
- Affordable Thermal Printers and Software
- And much more



Texpak, Inc

130 New Hyde Park Rd
Franklin Square, NY 11010
(800) 645-3416 or
(516) 326-7720
Fax (516) 326-7970
info@texpak.com
www.texpak.com



Presort Std
U.S. Postage
PAID
Permit # 255
Hicksville, NY 11801

